

Structured Cabling Solutions



CANOVATE®



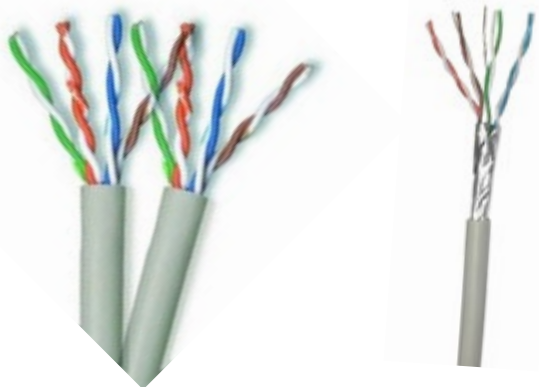
About Us

Canovate provides IT and Telecom infrastructure technology offerings that span from complete data centers, data center green cooling technologies to fiber optic connectivity based FTTX and fiber optic transmission and access solutions. Canovate designs and manufactures a wide range of innovative standard and customized products, technologies and solutions:

- ✓ Fiber optic connectivity based FTTX
- ✓ Fiber optic transmission and access
- ✓ Complete data centers
- ✓ Data center cooling, PDU, remote monitoring and access
- ✓ Outdoor racks and cabinets
- ✓ Wall-mount 19" enclosures
- ✓ Industrial 19" racks, cabinets and enclosures
- ✓ IT 19" network and server racks

Milestones

- 1965 Established as "PTT-ARLA" state owned Research Laboratory
- 1982 Became a private company, TELETAS
- 1984 Alcatel Telecom Exchange System 12 production
- 1991 ISO 9001 Certification
- 1993 Merger with ALCATEL
- 1996 Integration of ERP System
- 1999 Over 10 Million Subscriber line System 12 Exchange Systems developed, manufactured and delivered worldwide
- 2003 Relocation to brand new purpose built state-of-the-art manufacturing facilities in Istanbul
- 2004 Establishment of structural cabling and fiber optic business unit
- 2005 Multiple PCT Patent filings, 3rd Party Compliance Statement for Date and Telecom Products; development of fully integrated high density Optical Distribution Frame (ODF) Systems.
- 2006 Launch of Basic Outdoor Cabinet, Seismic 19" Rack Systems, Announcement of RoHS conformity, Gost-R Certification, IP41 up to IP65 approvals for cabinets and enclosures, UL approvals and renewals
- 2009 Launch of Data Center business unit including patented green cooling technology, Establishment of Canovate Russia and Establishment of Canovate Greece
- 2010 Launch of advanced high-density, industry first, Troy Fiber Optic ODF System, Establishment of Canovate Netherlands
- 2011 Establishment of fiber optic cable termination manufacturing lines and development IP PDU, Establishment of Canovate Iran
- 2012 Establishment of Canovate Middle East Office in UAE



UTP LAN CABLES

Category 5e U/UTP 100MHz LAN Cables

Canovate category 5e cable series consists of 100 Ohm impedance, 4-pair U/UTP cables for horizontal installations in local area networks (LANs). All cables fully conform to and provide a substantial margin above all Category 5e requirements of TIA/EIA-568-C.2 and IEC 61156-5(Second Version)

Construction

Connector	Bare annealed copper, Ø 0,5 mm 24AWG
Insulation	Polyolefin
Stranding	4 twisted pairs
Pair shielding	LSZH FR (Flame Retardant) or PVC

Part No Type

KU0-L-KK-C5e-0-1	Cat.5e UTP Cable LSZH FR (Grey), 305m Reel
KU0-P-KK-C5e-0-1	Cat.5e UTP Cable PVC (Grey), 305m Reel



Category 6 U/UTP 250MHz LAN Cables

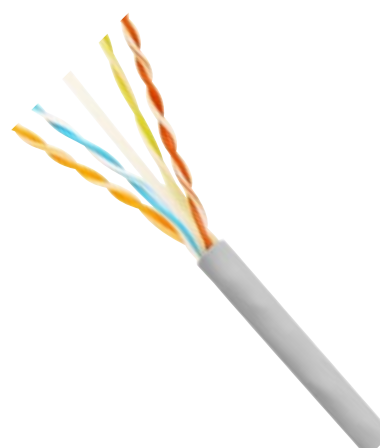
Canovate category 6 cable series consists of 100 Ohm impedance, 4-pair U/UTP cables for horizontal installations in local area networks (LANs). All cables fully conform to and provide a substantial margin above all Category 6 requirements of TIA/EIA-568-C.2 and IEC 61156-5(Second Version)

Construction

Connector	Bare annealed copper, Ø 0,57 mm 23AWG
Insulation	Polyolefin
Stranding	4 twisted pairs
Pair shielding	LSZH FR (Flame Retardant) or PVC

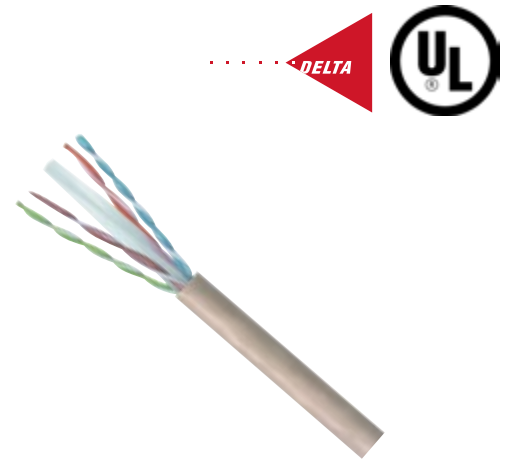
Part No Type

KU0-L-KK-C6-0-1	Cat.6 UTP Cable LSZH FR (Grey), 305m Reel
KU0-P-KK-C6-0-1	Cat.6 UTP Cable PVC (Grey), 305m Reel



Category 6A MR/UTP 500MHz LAN Cables

Canovate category 6A cable series consists of 100 Ohm impedance, 4-pair MR/UTP (Metal Reflector) cables for horizontal installations in local area networks (LANs). All cables fully conform to all Category 6A requirements of TIA/EIA-568-C.2 and Category 6A IEC 61156-5(Second Version)



Construction

Connector	Bare annealed copper, Ø 0,57 mm 23AWG
Insulation	Polyolefin
Stranding	4 twisted pairs
Pair shielding	LSZH FR (Flame Retardant) or PVC

Part No Type

KU0-L-KK-C6a-0-1	Cat.6A UTP Cable LSZH FR (Grey), 305m Reel
KU0-P-KK-C6a-0-1	Cat.6A UTP Cable PVC (Grey), 305m Reel

FTP LAN CABLES

Category 5e F/UTP 100MHz LAN Cables

Canovate category 5e cable series consists of 100 Ohm impedance, 4-pair F/UTP cables for horizontal installations in local area networks (LANs). All cables fully conform to and provide headroom above all Category 5e requirements of TIA/EIA-568-C.2 and IEC 61156-5(Second Version)

Construction

Connector	Bare annealed copper, Ø 0,5 mm 24AWG
Insulation	Polyolefin
Stranding	4 twisted pairs
Pair shielding	LSZH FR (Flame Retardant) or PVC
Overall shield	Laminated aluminum foil %100 coverage

Part No Type

KFU-L-KK-C5e-0-1	Cat.5e F/UTP Cable LSZH FR (Grey), 305m Reel
KFU-P-KK-C5e-0-1	Cat.5e F/UTP Cable PVC (Grey), 305m Reel



Category 6 U/FTP 250MHz LAN Cables

Canovate category 6 cable series consists of 100 Ohm impedance, 4-pair U/FTP cables for horizontal installations in local area networks (LANs). All cables fully conform to and provide headroom above all Category 6 requirements of TIA/EIA-568-C.2 and IEC 61156-5(Second Version)

Construction

Connector	Bare annealed copper, Ø 0,57 mm 23AWG
Insulation	Polyolefin
Stranding	4 twisted pairs
Pair shielding	LSZH FR (Flame Retardant) or PVC
Overall shield	Laminated aluminum foil %100 coverage

Part No Type

KUF-L-KK-C6-0-1	Cat.6 F/UTP Cable LSZH FR (Grey), 305m Reel
KUF-P-KK-C6-0-1	Cat.6 F/UTP Cable PVC (Grey), 305m Reel



Category 6A U/FTP 500MHz LAN Cables

Canovate category 6A cable series consists of 100 Ohm impedance, 4-pair U/FTP cables for horizontal installations in local area networks (LANs). All cables fully conform to all Category 6A requirements of TIA/EIA-568-C.2 and Category 6A IEC 61156-5(Second Version)

Construction

Connector	Bare annealed copper, Ø 0,57 mm 23AWG
Insulation	Polyolefin
Stranding	4 twisted pairs
Pair shielding	LSZH FR (Flame Retardant) or PVC
Overall shield	Laminated aluminum foil %100 coverage

Part No Type

KUF-L-KK-C6a-0-1	Cat.6A U/FTP Cable LSZH FR (Grey), 305m Reel
KUF-P-KK-C6a-0-1	Cat.6A U/FTP Cable PVC (Grey), 305m Reel



Category 7 S/FTP 600MHz LAN Cables

Canovate category 7 cable series consists of 100 Ohm impedance, 4-pair S/FTP cables for horizontal installations in local area networks (LANs). All cables fully conform to all Category 7 requirements of TIA/EIA-568-C.2 and Category 7 IEC 61156-5(Second Version)

Construction

Connector	Bare annealed copper, 23AWG, 600 MHz
Insulation	Polyolefin
Stranding	4 twisted pairs
Pair shielding	LSZH FR (Flame Retardant) or PVC
Overall shield	Polyester-aluminum foil %100 coverage

Part No Type

KSF-L-KK-C7-0-1	Cat.7 S/FTP Cable LSZH FR (Grey), 500m Reel
KSF-P-KK-C7-0-1	Cat.7 S/FTP Cable PVC (Grey), 500m Reel



Category 7A S/FTP 1000MHz LAN Cables

Canovate category 7 cable series consists of 100 Ohm impedance, 4-pair S/FTP cables for horizontal installations in local area networks (LANs). All cables fully conform to all Category 7 requirements of TIA/EIA-568-C.2 and Category 7 IEC 61156-5(Second Version)

Construction

Connector	Bare annealed copper, 22AWG, 1000 MHz
Insulation	Polyolefin
Stranding	4 twisted pairs
Pair shielding	LSZH FR (Flame Retardant) or PVC
Overall shield	Polyester-aluminum foil %100 coverage

Part No Type

KSF-L-KK-C7a-0-1	Cat.7A S/FTP Cable, LSOH, (Grey), 500m Reel
KSF-P-KK-C7a-0-1	Cat.7A S/FTP Cable, PVC, (Grey), 500m Reel



UTP PATCH CORDS

Category 5e UTP Patch Cords

- ✓ 2 x Cat.5e RJ45 plug, LSZH or PVC
- ✓ Unshielded
- ✓ TIA/EIA 568B coded

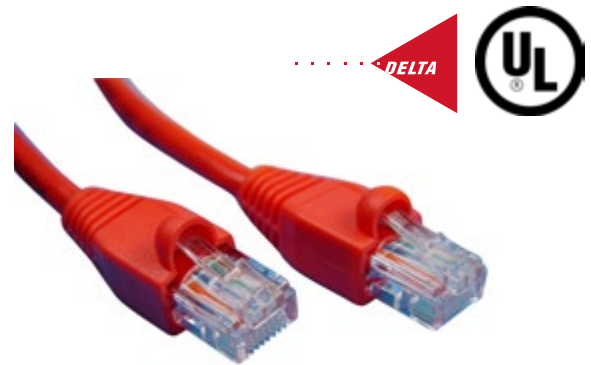
Part No **Type**

KU0-L-PC0x-C5e-R45-y	x meter Cat.5e UTP LSZH Patch Cord, y
KU0-P-PC0x-C5e-R45-y	x meter Cat.5e UTP PVC Patch Cord, y

X : Available lengths in meter 1,2,3,5 and 10

Y : Available colors

(0: White, 1:Grey, 2:Black, 3:Red, 4:Green, 5:Blue, 6:Yellow, 7:Orange)



Category 6 UTP Patch Cords

- ✓ 2 x Cat.6 RJ45 plug, LSZH or PVC
- ✓ Unshielded
- ✓ TIA/EIA 568B coded

Part No **Type**

KU0-L-PC0x-C6-R45-y	x meter Cat.6 UTP LSZH Patch Cord, y
KU0-P-PC0x-C6-R45-y	x meter Cat.6 UTP PVC Patch Cord y

X : Available lengths in meter 1,2,3,5 and 10

Y : Available colors

(0: White, 1:Grey, 2:Black, 3:Red, 4:Green, 5:Blue, 6:Yellow, 7:Orange)



Category 6A UTP Patch Cords

- ✓ 2 x Cat.6A RJ45 plug, LSZH or PVC
- ✓ 10 Gbit 500MHz
- ✓ Unshielded
- ✓ TIA/EIA 568B coded

Part No **Type**

KU0-L-PC0x-C6a-R45-y	x meter Cat.6A UTP LSZH Patch Cord, y
KU0-P-PC0x-C6a-R45-y	x meter Cat.6A UTP PVC Patch Cord, y

X : Available lengths in meter 1,2,3,5 and 10

Y : Available colors

(0: White, 1:Grey, 2:Black, 3:Red, 4:Green, 5:Blue, 6:Yellow, 7:Orange)



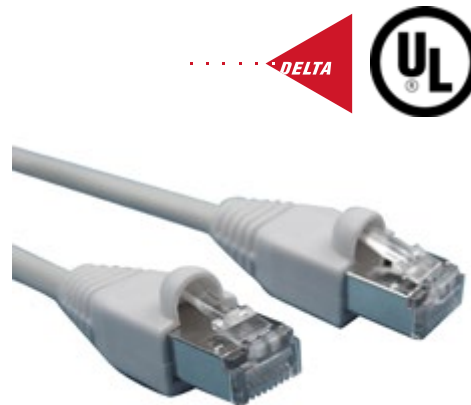
FTP PATCH CORDS

Category 5e FTP Patch Cords

- ✓ 2 x Cat.5e RJ45 plug, LSZH or PVC
- ✓ Foil shielded
- ✓ TIA/EIA 568B coded

Part No	Type
KF0-L-PC0x-C5e-R45-y	x meter Cat.5e FTP LSZH Patch Cord, y
KF0-P-PC0x-C5e-R45-y	x meter Cat.5e FTP PVC Patch Cord, y

X : Available lengths in meter 1,2,3,5 and 10
 Y : Available colors
 (0: White, 1:Grey, 2:Black, 3:Red, 4:Green, 5:Blue, 6:Yellow, 7:Orange)



Category 6 FTP Patch Cords

- ✓ 2 x Cat.6 RJ45 plug, LSZH or PVC
- ✓ Foil shielded
- ✓ TIA/EIA 568B coded

Part No	Type
KF0-L-PC0x-C6-R45-y	x meter Cat.6 FTP LSZH Patch Cord, y
KF0-P-PC0x-C6-R45-y	x meter Cat.6 FTP PVC Patch Cord, y

X : Available lengths in meter 1,2,3,5 and 10
 Y : Available colors
 (0: White, 1:Grey, 2:Black, 3:Red, 4:Green, 5:Blue, 6:Yellow, 7:Orange)



Category 6A FTP Patch Cords

- ✓ 2 x Cat.6 RJ45 plug, LSZH or PVC
- ✓ 10 Gbit 500MHz
- ✓ Foil shielded
- ✓ TIA/EIA 568B coded

Part No	Type
KF0-L-PC0x-C6a-R45-y	x meter Cat.6A FTP LSZH Patch Cord, y
KF0-P-PC0x-C6a-R45-y	x meter Cat.6A FTP PVC Patch Cord, y

X : Available lengths in meter 1,2,3,5 and 10
 Y : Available colors (0: White, 1:Grey, 2:Black, 3:Red, 4:Green, 5:Blue, 6:Yellow, 7:Orange)



UTP PATCH PANELS

24 Port UTP Category 5e Patch Panel 1U

- ✓ 24 Port unshielded RJ45 jacks
- ✓ Contacts are phosphor bronze plated with 50 micro inches hard gold
- ✓ Class D (100MHz) acc. to ISO/IEC 11801 and EN50173
- ✓ Printed with color code TIA 568A/B, 8 pole LSA terminals
- ✓ 19" steel sheet housing

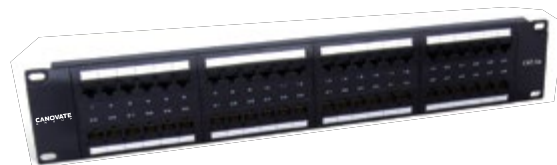
Part No	Type
KU0-0-PP1U24-C5e-R45-2	24 Port Cat.5e UTP Patch Panel, 1U ,Black



48 Port UTP Category 5e Patch Panel 2U

- ✓ 48 port unshielded RJ45 jacks
- ✓ Class D (100MHz) acc. to ISO/IEC 11801 and EN50173
- ✓ Printed with color code TIA 568A/B, 8 pole LSA terminals
- ✓ 19" steel sheet housing

Part No	Type
KU0-0-PP2U48-C5e-R45-2	48 Port Cat.5e UTP Patch Panel, 2U ,Black



24 Port UTP Category 6 Patch Panel 1U

- ✓ 24 port unshielded RJ45 jacks
- ✓ Class E (250MHz) acc. to ISO/IEC 11801 and EN50173
- ✓ Printed with color code TIA 568A/B, 8 pole LSA terminals
- ✓ 19" steel sheet housing

Part No	Type
KU0-0-PP1U24-C6-R45-2	24 Port Cat.6 UTP Patch Panel, 1U ,Black



48 Port UTP Category 6 Patch Panel 2U

- ✓ 48 port unshielded RJ45 jacks
- ✓ Class E (250MHz) acc. to ISO/IEC 11801 and EN50173
- ✓ Printed with color code TIA 568A/B, 8 pole LSA terminals
- ✓ 19" steel sheet housing

Part No	Type
KU0-0-PP2U48-C6-R45-2	48 Port Cat.6 UTP Patch Panel, 2U ,Black



PREMIUM SERIES UTP PATCH PANEL

Branded by Canovate/Telegärtner

24 Port UTP Category 6A Patch Panel 1U

- ✓ 24 port unshielded RJ45 jacks
- ✓ Class EA (500MHz) acc. to ISO/IEC 11801 and EN50173
- ✓ Printed with color code TIA 568A/B
- ✓ 8 pole LSA terminals
- ✓ 19" steel sheet housing
- ✓ Real time re-embedded by Telegartner

Part No	Type
KU0-0-PP1U24-C6a-R45-2	24 Port Cat.6A UTP Patch Panel, 1U ,Black



REAL TIME
Re-Embedded

STP FTP PATCH PANELS

24 Port STP (Shielded) Category 5e Patch Panel 1U

- ✓ 24 port shielded RJ45 jacks
- ✓ Class D (100MHz) acc. to ISO/IEC 11801 and EN50173
- ✓ Printed with color code TIA 568A/B
- ✓ 8 pole LSA terminals
- ✓ 19" fully shielded steel plate housing

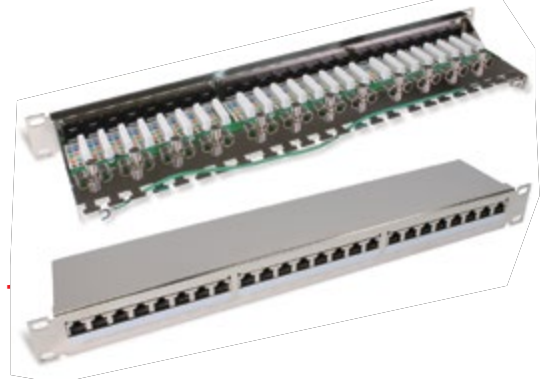
Part No	Type
KF0-0-PP1U24-C5e-R45-2	24 Port Cat.5e STP Patch Panel, 1U ,Black



24 Port STP (Shielded) Category 6 Patch Panel 1U

- ✓ 24 port shielded RJ45 jacks
- ✓ Contacts are phosphor bronze plated with 50 micro inches hard gold
- ✓ KRONE/110 universal IDC connector provides vertical termination for 23-26 AWG solid wires
- ✓ Dual T568A/T568B wiring
- ✓ Polycarbonate, 94V0 rated
- ✓ UL, cUL and DELTA EC listed

Part No	Type
KF0-0-PP1U24-C6-R45-2	24 Port Cat.6 STP Patch Panel, 1U ,Black



12 Port STP (Shielded) Category 6 Patch Panel

- ✓ 12 ports patch panel, Cat.6 STP type.
- ✓ According to the standard of ISO/IEC 11801:2000 CLASS E and ANSI/TIA/EIA/568B.2-1 Cat.6 standard. T568A punching sequence and T568B punching sequence are both compatible. Fitting for horizontal distribution in the equipments room and equipments connecting.
- ✓ FCC port for Cat.6 STP patch cord and IDC for horizontal distribution cables.
- ✓ Compatible for STP Cat.6 or Cat.5e Cat.5 general cable distribution systems.
- ✓ 110 IDC type or LSA type for your choice.

Part No	Type
KF0-0-PP1U12-C6-R45-2	12 Port Cat.6 FTP Patch Panel, Black



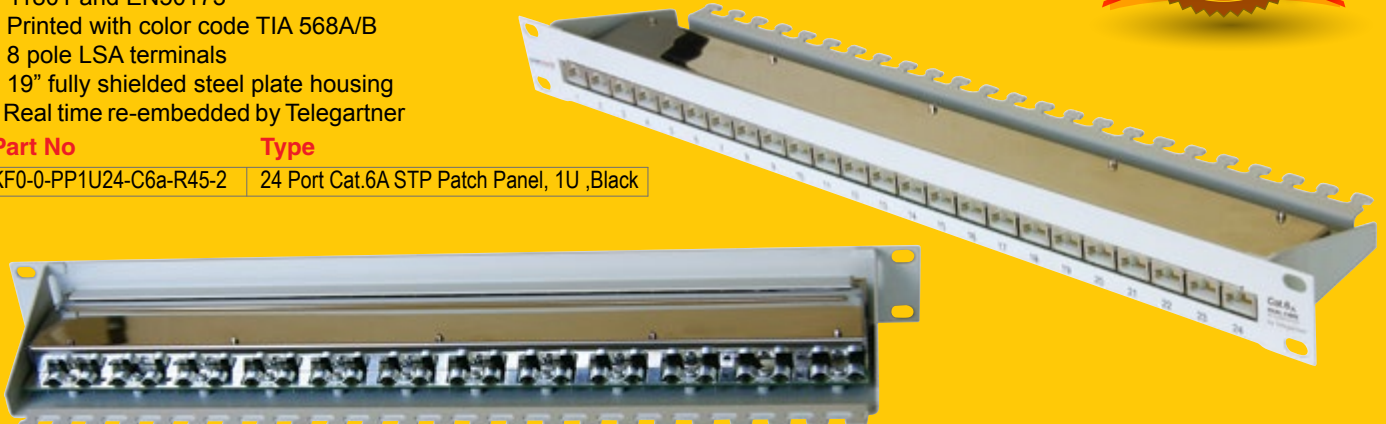
PREMIUM SERIES STP PATCH PANEL

Branded by Canovate/Telegärtner

24 Port STP Category 6A Patch Panel

- ✓ 24 port shielded RJ45 jacks
- ✓ Class E_A (500MHz) acc. to ISO/IEC 11801 and EN50173
- ✓ Printed with color code TIA 568A/B
- ✓ 8 pole LSA terminals
- ✓ 19" fully shielded steel plate housing
- ✓ Real time re-embedded by Telegartner

Part No	Type
KF0-0-PP1U24-C6a-R45-2	24 Port Cat.6A STP Patch Panel, 1U ,Black

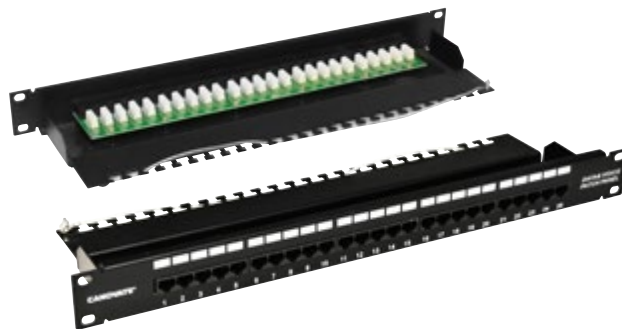


REAL TIME
Re-Embedded

TELEPHONE PATCH PANELS

25 Port Cat 3 Telephone Patch Panel 1U

- ✓ 1U size 25 port Cat.3 ISDN patch panel, can be used in standard 19" cabinet.
- ✓ The cable manager is combined in this patch panel. All kinds of cables with different dimensions can be fixed on the patch panel.
- ✓ FCC port for RJ45 Cat.3 patch cord and IDC for horizontal distribution cables.

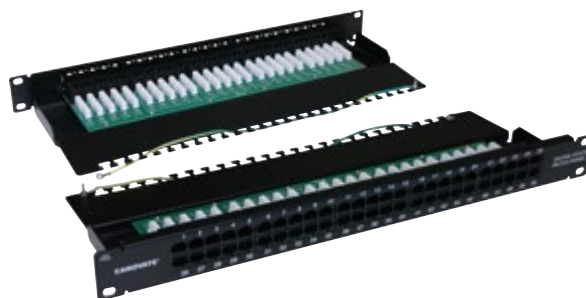


Part No **Type**

K00-0-PP1U25-C3-R45-2	25 Port Cat.3 Telephone Patch Panel, 1U ,Black
-----------------------	--

50 Port Cat 3 Telephone Patch Panel 1U

- ✓ 1U size 50 port Cat.3 ISDN patch panel, can be used in standard 19" cabinet.
- ✓ The cable manager is combined in this patch panel. All kinds of cables with different dimensions can be fixed on the patch panel.
- ✓ FCC port for RJ45 Cat.3 patch cord and IDC for horizontal distribution cables.



Part No **Type**

K00-0-PP1U50-C3-R45-2	50 Port Cat.3 Telephone Patch Panel, 1U ,Black
-----------------------	--

KEYSTONE BLANK PATCH PANELS

24 Port Blank Patch Panel 1U

- ✓ 1U size 24 port blank patch panel, can be used in standard 19" cabinet.
- ✓ Compatible with all ICC shielded Connectors.
- ✓ Provides 24 open ports in 1RMS for high density applications.
- ✓ Includes rear cable management to facilitate proper bend radius of cable



Part No **Type**

K00-0-PPBL24-0-R45-2	24 Port Blank Patch Panel, 1U ,Black
K00-0-PPBL48-0-R45-2	48 Port Blank Patch Panel, 1U ,Black



24 Port Eco Blank Patch Panel 1U

- ✓ 1U size 24 port blank patch panel, can be used in standard 19" cabinet.
- ✓ Compatible with all ICC shielded Connectors.
- ✓ Includes rear cable management to facilitate proper bend radius of cable



Part No **Type**

K00-0-PPBL24-0-R45-3	24 Port Blank Patch Panel, 1U ,Black
----------------------	--------------------------------------

KEYSTONE ANGLED BLANK PATCH PANEL

The angled patch panel is designed to support high-density applications without the need for horizontal cable management.

- ✓ Combines modular design with high density
- ✓ Capable of supporting multiple media types using a variety of MAX modules
- ✓ Available in 1U 24 port version
- ✓ Includes panel designation area for identifying multiple patch panels
- ✓ Bold port ID's provide ready identification
- ✓ Lightweight, high strength brushed aluminum with black anodized protective finish

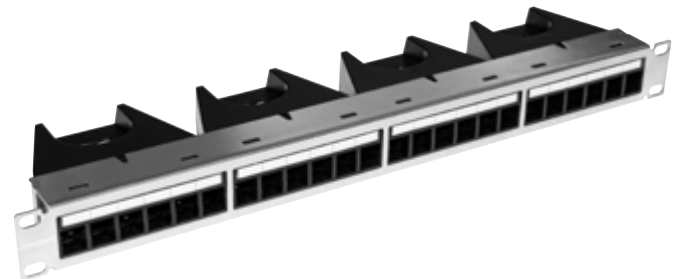


Part No	Type
KF0-0-PP1U24-SPC-R45-2	24 Port Angled Blank Patch Panel, 1U ,Black

High Density Angled Blank Panel For Pre-Termination Solution

In today's workplace, where network downtime is costly and detrimental to any business or organization, bringing a new data center online must be completed as quickly as possible. Quick and easy installations that guarantee reliable performance are more critical than ever.

Canovate Pre-Terminated Copper Cabling System offers the best standards in a custom terminated cable assembly system that's ready to plug and go. Its innovative modular design combines high performance and installer friendly features with the quick deployment and reliability of a factory terminated and tested cabling system. Lengths are customized to your specific needs and every termination is housed in our robust, protective cassettes to make installation in a snap-in way. Each cassette snaps easily into the modular panel, which fits into a standard 19" rack



Part No	Type
KU0-0-PPAT-0RJ45-2	UTP Patch Panel for Data Center,24 Port



Snap-in Module

CATEGORY 6A SHIELDED KEYSTONE JACK (Patch Panel Use)

Category 6a shielded keystone jack supports the 10/100/1G BASE-T Ethernet, as well as advanced new 10G BASE-T Ethernet. The shielded jack with industrial leading transmission performance and provide exceptional levels of headroom. Zinc-alloy metal shell balances/ eliminates the Alien crosstalk while the data is at high speed transmission. Narrow width design fits 24 ports in one unit panel for most efficient use of 1U panel.

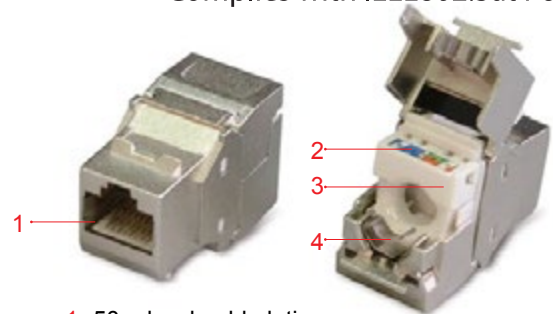
Highlights

- ✓ Zinc-alloy metal shell
- ✓ Available in both tool-free version and 110 punch down version
- ✓ Contacts are phosphor bronze plated with 50 micro inches hard gold
- ✓ Dual T568A & T568B wiring
- ✓ Complies with FCC Part 68
- ✓ Polycarbonate 94V0 rated
- ✓ Delta EC listed and complies with IEEE802.3at PoE+

Part No	Type
KU0-JM-S-C6A-180-1	RJ-45 8-Conductor Cat 6a, Tool-Free, Shielded, 180 degree, H.D. version
KU0-JM-S-C6A-180-2	RJ-45 8-Conductor Cat 6a, 110 IDC, Shielded, 180 degree, H.D. version



Complies with IEEE802.3at PoE+



- 1- 50 μ hard gold plating
- 2- Dual T568A/B wiring label
- 3- Cable Guide
- 4- Grounding Clip

KU0-JM-S-C6A-180-1



KU0-JM-S-C6A-180-2



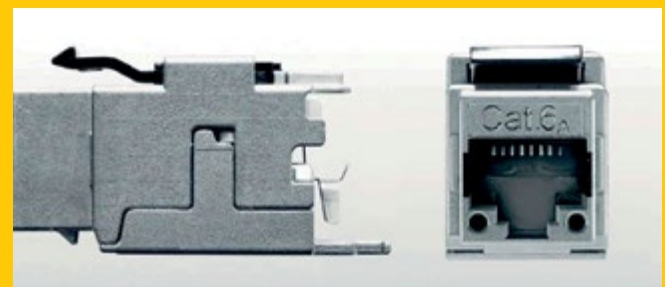
PREMIUM SERIES CAT6a KEYSTONE TOOL-LESS JACK

Branded by Canovate/Telegärtner

AMJ Module K Cat.6_A

- ✓ Re-embedded Cat.6A (500 MHz) tested
- ✓ 10 Gigabit-Ethernet compliant (IEEE 802.3an)
- ✓ Class EA: 90 m 2-Connector Permanent Link acc. to ISO/IEC 11801 AMD2 (2010-04)
- ✓ 6 dB typ. Permanent Link Class EA under real installation conditions
- ✓ Universally, worldwide available installation dimension for mounting cut-outs 19,3 x 14,7 mm
- ✓ Fully-automated production of real Cat.6A RJ45 jack/core to guarantee a uniformly high quality standard (transmission characteristics) mating face: EN 60603-7-51
- ✓ Suitable for PoE+ (High Power over Ethernet) acc. to IEEE 802.3at
- ✓ Manufacture of all piece parts and all assembly steps monitored by the independent test laboratory 3P

Part No	Type
KU0-JM-S-C6A-180-2	Cat.6A Telegartner FTP Keystone Jack, Metallic



Cat.6_A

10 GBE

500 MHz

fully shielded

PoE+

CATEGORY 6A SHIELDED KEYSTONE JACK (Wall-outlet Use)



Complies with IEEE802.3at PoE+

Highlights

- ✓ Zinc-alloy metal shell
- ✓ Tool-free, no additional tool required for termination
- ✓ Contacts are phosphor bronze plated with 50 micro inches hard gold
- ✓ T568A wiring
- ✓ Complies with FCC Part 68
- ✓ Polycarbonate 94V0 rated



Part No	Type
KU0-JM-S-C6A-90-1	RJ-45 8-Conductor Cat 6a, Tool-Free, Shielded, 90 degree, H.D. version

CATEGORY 6A UNSHIELDED KEYSTONE JACK (Patch Panel Use)

Category 6a unshielded keystone jack supports the 10/100/1G BASE-T Ethernet, as well as advanced new 10G BASE-T Ethernet. By Special designed housing and installation the jacks on a staggered 24-port 1U patch panel, it minimizes additional AXT from neighboring connectors and provide transmission performance beyond 500MHz and Alien crosstalk requirements.

Highlights

- ✓ Tool-free, no additional tool required for termination
- ✓ Contacts are phosphor bronze plated with 50 micro inches hard gold
- ✓ Dual T568A & T568B wiring
- ✓ Complies with FCC Part 68
- ✓ Polycarbonate 94V0 rated
- ✓ Complies with IEEE802.3at PoE+



Part No	Type
KU0-JM-U-C6A-180-1	RJ-45 8-Conductor Cat 6a, Tool-Free, Unshielded, 180 degree, H.D. version

CATEGORY 6 SHIELDED KEYSTONE JACK (Patch Panel Use)

Category 6 shielded keystone jack designed for superior performance and easy assembly, meets and exceeds ANSI/TIA 568-C2 and ISO/IEC 11801 2nd edition Category 6 standards, supporting Gigabit Ethernet application and beyond. Narrow width design fits 24 ports in one unit panel for most efficient use of 1U panel

Highlights

- ✓ One-piece shielded metal cover for quick installation
- ✓ Contacts are phosphor bronze plated with 50 micro inches hard gold
- ✓ Adjustable strain relief provides most flexibility of installation
- ✓ Dual T568A & T568B wiring
- ✓ Complies with FCC Part 68
- ✓ Polycarbonate 94V0 rated
- ✓ UL, cUL, Delta EC listed and complies with IEEE802.3at PoE+



Complies with IEEE802.3at PoE+



Part No	Type
KU0-JM-S-C6-180-1	RJ-45 8-Conductor Cat 6, 110/KRONE IDC, Shielded, 180 degree, H.D. version

CATEGORY 6 SHIELDED KEYSTONE JACK (Wall-outlet Use)

Highlights

- ✓ One-piece shielded metal cover for quick installation
- ✓ Contacts are phosphor bronze plated with 50 micro inches hard gold
- ✓ Polycarbonate 94V0
- ✓ 110/KRONE Universal IDC
- ✓ Dual T568A & T568B wiring
- ✓ Complies with FCC Part 68
- ✓ UL, cUL and DELTA EC listed



Part No	Type
KU0-JM-S-C6-90-1	RJ-45 8-Conductor Cat 6, 110/KRONE IDC, Shielded, 90 degree, H.D. version

CATEGORY 6 SHIELDED TOOL-FREE KEYSTONE JACK (Wall-outlet Use)

Category 6 shielded keystone jack designed for superior performance and easy assembly, meets and exceeds ANSI/TIA 568-C2 and ISO/IEC 11801 2nd edition Category 6 standards, supporting Gigabit Ethernet application and beyond.

Highlights

- ✓ Zinc-alloy metal shell
- ✓ Contacts are phosphor bronze plated with 50 micro inches hard gold
- ✓ Short depth design, fit easily into back box of desk, floor and wall outlets
- ✓ Dual T568A & T568B wiring
- ✓ Complies with FCC Part 68
- ✓ Polycarbonate 94V0 rated
- ✓ Delta EC&EN41003 listed



Part No	Type
KU0-JM-S-C6-90-2	RJ-45 8-Conductor Cat 6, 110/KRONE IDC, Shielded, 90 degree, Short depth design

CATEGORY 6 UNSHIELDED KEYSTONE JACK (Patch Panel Use)

Category 6 unshielded keystone jack designed for superior performance and easy assembly, meets and exceeds ANSI/TIA 568-C2 and ISO/IEC 11801 2nd edition Category 6 standards, supporting Gigabit Ethernet application and beyond. Narrow width design fits 24 ports in one unit panel for most efficient use of 1U panel



Complies with IEEE802.3at PoE+

Highlights

- ✓ Contacts are phosphor bronze plated with 50 micro inches hard gold
- ✓ 110/ KRONE Universal IDC connector provides vertical termination for 23-26 AWG solid wires
- ✓ Dual T568A & T568B wiring
- ✓ Supplied with plastic strain relief cap for IDC connectors
- ✓ Large selection of colors, provides many options of color coded designation port
- ✓ Complies with FCC Part 68
- ✓ Polycarbonate, 94V0 rated
- ✓ ETL, UL, cUL and DELTA EC listed

Part No	Type
KU0-JM-U-C6-180-1	RJ-45 8-Conductor Cat 6, KRONE/110 IDC, Unshielded, 180 degree, H.D. version



CATEGORY 6 UNSHIELDED KEYSTONE JACK TOOL-FREE (Wall-outlet Use)

Highlights

- ✓ Tool-free, no additional tool required for termination
- ✓ Contacts are phosphor bronze plated with 50 micro inches hard gold
- ✓ T568B wiring
- ✓ Large selection of colors, provides many options of color coded designation port
- ✓ Complies with FCC Part 68
- ✓ Polycarbonate, 94V0 rated
- ✓ UL, cUL and DELTA EC listed.

Part No	Description
KU0-JM-U-C6-90-1	RJ-45, 8-Conductor Cat 6, 110/ KRONE IDC, Unshielded, 90 degree, H.D. version



CATEGORY 5e SHIELDED KEYSTONE JACK (Patch Panel Use)

Category 5e keystone metal-shielded keystone jack is designed for superior performance and easy assembly. Meets ANSI/TIA 568-C.2 and ISO/IEC 11801 2nd edition. Category 5e standard.



Highlights

- ✓ Contacts are phosphor bronze plated with 50 micro inches hard gold
- ✓ 110/ KRONE Universal IDC connector provides vertical termination for 24-26 AWG solid wires
- ✓ One-piece shielded metal cover for quick installation
- ✓ Dual T568A & T568B wiring
- ✓ Complies with FCC Part 68
- ✓ Polycarbonate, 94V0 rated
- ✓ UL, cUL and DELTA EC listed



Part No	Description
KU0-JM-S-C5E-180-1	RJ-45, 8-Conductor Cat 5e, 110/ KRONE IDC, Shielded, 180 degree, H.D. version

CATEGORY 5e SHIELDED KEYSTONE JACK (Wall-outlet Use)

Highlights

- ✓ One-piece shielded metal cover for quick installation
- ✓ Tool-free, no additional tool required for termination
- ✓ Contacts are phosphor bronze plated with 50 micro inches hard gold
- ✓ 110/ KRONE Universal IDC connector provides vertical termination for 24-26 AWG solid wires
- ✓ T568A wiring
- ✓ Complies with FCC Part 68
- ✓ Polycarbonate, 94V0 rated
- ✓ UL, cUL and DELTA EC listed



Part No	Description
KU0-JM-S-C5E-90-1	RJ-45, 8-Conductor Cat 5e, 110/ KRONE IDC, Tool-Free, Shielded, 90 degree, H.D. version

CATEGORY 5e UNSHIELDED KEYSTONE JACK (Patch Panel Use)

Highlights

- ✓ Contacts are phosphor bronze plated with 50 micro inches hard gold
- ✓ 110/ KRONE Universal IDC connector provides vertical termination for 23-26 AWG solid wires
- ✓ Dual T568A & T568B wiring compatible with Category 5 enhanced requirement
- ✓ Supplied with cap for IDC connectors
- ✓ Large selection of colors, provides many options of color coded designation port
- ✓ Complies with FCC Part 68
- ✓ Polycarbonate, 94V0 rated



Part No	Description
KU0-JM-U-C5E-180-1	RJ-45, 8-Conductor Cat 5e, KRONE/110 IDC, Unshielded, 180 degree, H.D. version

CATEGORY 5e UNSHIELDED KEYSTONE JACK (Wall-outlet Use)

Category 5e keystone jack is designed for superior performance that meets or exceeds industrial Standard ANSI/ TIA 568-C.2 and ISO/IEC 11801 2nd edition requirements. The keystone jack will balance signal transmission of insertion loss and crosstalk from 1 to 100Mhz.

Highlights

- ✓ Contacts are phosphor bronze plated with 50 micro inches hard gold
- ✓ 110/ KRONE Universal IDC connector provides vertical termination for 23-26 AWG solid wires
- ✓ Dual T568A & T568B wiring
- ✓ Supplied with cap for IDC connectors
- ✓ Large selection of colors, provides many options of color coded designation port
- ✓ Complies with FCC Part 68
- ✓ Polycarbonate, 94V0 rated
- ✓ ETL, UL, cUL and DELTA EC listed



Part No	Description
KU0-JM-U-C5E-90-1	RJ-45, 8-Conductor Cat 6, 110/ KRONE IDC, Unshielded, 90 degree, H.D. version

Face plates & Wall outlets

European Type Wall Plate & Module

The European type wall plate is made of 94V0 with outside dimension 80x80 mm. The clip on assembly design of wall plate frame and modules is easy for installation and maintenance. 1-, 2 & 3- port wall plate modules are with angled opening, this advantage the cable bending after Keystone Jack installation.

Part No	Description
KU0-WP-BL-1	European wall plate, single gang

Part No	Description
KU0-WP-SP-1	50x50mm single port module
KU0-WP-DP-1	50x50mm dual port module
KU0-WP-TP-1	50x50mm triple port module, H.D. version



Category 5e European Dual port Shielded Wall Plate

Part No	Description
KU0-WP-C5E-FM-1	European type dual port Cat. 5e shielded wall plate flush mount
KU0-WP-C5E-SM-1	European type dual port Cat. 5e shielded wall plate surface mount



European Type Flush Mount Wall Plate

European type wall plates comply with standard size (80x80mm) for use with series II angled snap-in modules for different configuration of jack and connectors. Can be used with shielded keystone jack for maximum radio noise protection. Write-on designation label with clear holder for different system or station identification.

Snap-in modules can be easily snapped out of the front of wall plate, so that changes can be made without removing the wall plate after installation.

Part No	Description
KU0-WP-BLM-1	European wall plate with metal gasket.



European Type Square Wall Box

The wall box is for surface mounting on wall, cabinet or other flat surface. Wall box provides breakouts on four sides and bottom for cable entry.

Part No	Description
KU0-WP-SWB-1	80x80 mm European type, Height 35 mm



French Type Wall Plate&Module

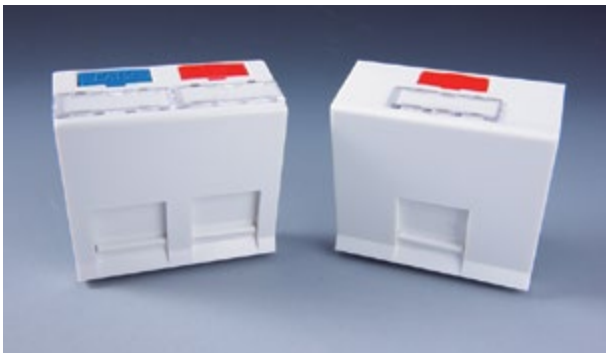
The flush mount wall plate is made of UL 94V0 with 45x45 mm inside opening. Modules are in size 45x45 mm or 22.5x45mm to provide single port or dual port loading ability for all Canovate Keystone Jack.



Part No	Description
KU0-WP-FBL-1	French wall plate, Single gang



Part No	Description
KU0-WP-FASM-2	22.5x45 mm Angled single port module
KU0-WP-FFSM-2	22.5x45 mm Flat single port module
KU0-WP-FBM-2	22.5x45 mm Flat blank module



Part No	Description
KU0-WP-FASM-1	45x45 mm Angled single port module
KU0-WP-FADM-1	45x45 mm Angled dual port module



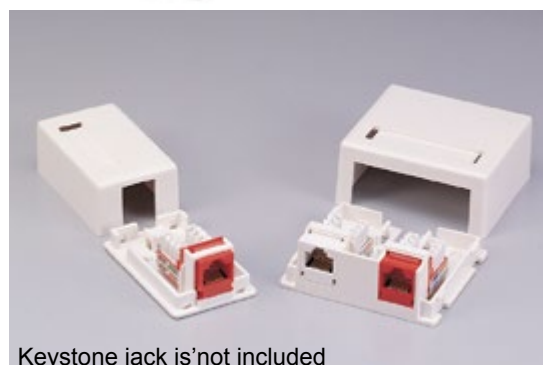
Part No	Description
KU0-WP-FSM-1	45x45 mm Flat single port module
KU0-WP-FDM-1	45x45 mm Flat dual port module

Keystone Jack Surface Mount Box

The keystone jack wall mount boxes are perfect for surface mount application. Boxes come with mounting screws and adhesive tape, cable tie for strain relief. Snap on cover for easy closure or access which will accommodate keystone jack. Write-on label with holder for easy designation of different system or station

Part No	Description
KU0-SM-OJ-1	One jack, 36x58x26mm(LxWxH)
KU0-SM-TJ-1	Two jacks, 62x58x26mm(LxWxH)

Suitable Jacks 90° keystone jack



Keystone jack is not included

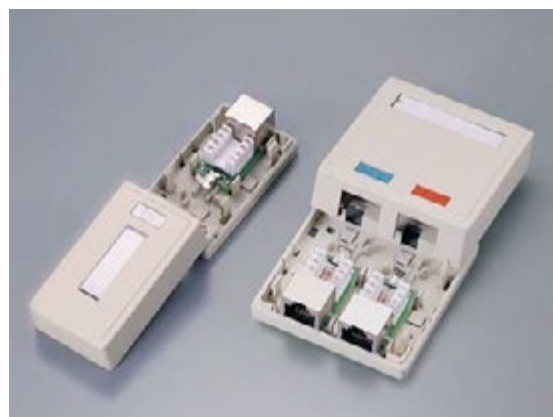
Jack Built-in Surface Mount Box

The surface mount box comes in one two ports. Boxes supplied with mounting screws and adhesive table. Boxes meet ANSI/ TIA 568-C. Category 5e specifications, both shielded and unshielded version are available.

Highlights

- ✓ Contacts are phosphor plated with 50 micro inches hard gold.
- ✓ 110/KRONE Universal IDC connector provides vertical termination for 24-26 AWG solid wires.
- ✓ Dual T568A&T568B wiring compatible with Category 5 enhanced requirement.
- ✓ 3 snap-in icons with-voice, data and Cat.5e icons.

Part No	Description
KU0-SM-OJ-U-C5E-1	One port RJ45, 8-Conductor Cat 5e Unshielded, 40x70x27 mm (LxWxH)
KU0-SM-TJ-U-C5E-1	Two port RJ45, 8-Conductor Cat 5e Unshielded, 65x70x27 mm (LxWxH)



Direct Buried Type Single Sheathed Fiber Optic Cables

- ✓ Loose tube designed.
- ✓ Direct buried and/or duct type installation for highly reliable industrial applications.
- ✓ Designed for outside applications, also it's designed to protect optical fiber for the unexpected mechanical and environmental conditions.
- ✓ Qualification and acceptance testing are performed to assure the optical cable's performance and durability in several environments.

Highlights

- ✓ Fiber counts up to 216
- ✓ High tensile strength design
- ✓ Fibers per loose tube 1-12
- ✓ Gel filled cable core for the water resistance
- ✓ Dry core design is also possible for water resistance in customer request
- ✓ Suitable for duct application
- ✓ Colored fiber for the quick identification
- ✓ UV resistance for the outer Sheath
- ✓ High fiber count to diameter ratio
- ✓ Fully complied with Telcordia GR-20 and TIA/EIA standards
- ✓ Colored fiber for the quick identification
- ✓ Ripcord for easy strip outer sheath

Applications

- ✓ Telecommunication applications
- ✓ Video applications
- ✓ Distribution
- ✓ Long Haul Communication
- ✓ Metropolitan Communication Systems



Cable Weight & Diameter

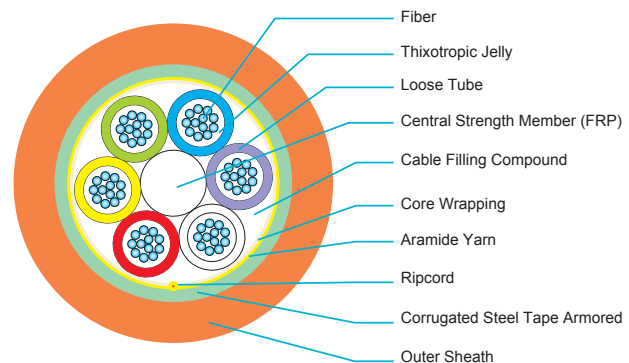
Item	Number of Fiber	Fiber Per Tube	Number of Tube	Number of Dummy Tube	Nom Outer Diameter mm	Nom Cable Weight Kg/km	Reel Length Km*	Part No
Direct Buried Type Single Sheathed Fiber Optic Cables	4	2	2	4	12,5	160	4	CAN-DB-SS-004
	6	2	3	3	12,5	160	4	CAN-DB-SS-006
	12	2	6	0	12,5	160	4	CAN-DB-SS-012
	24	4	6	0	12,5	160	4	CAN-DB-SS-024
	36	6	6	0	12,5	160	4	CAN-DB-SS-036
	48	8	6	0	12,5	160	4	CAN-DB-SS-048
	60	12	5	1	12,5	160	4	CAN-DB-SS-060
	72	12	6	0	12,5	160	4	CAN-DB-SS-072
	96	12	8	0	13,5	200	4	CAN-DB-SS-096
	144	12	12	0	16,0	275	4	CAN-DB-SS-144
192	12	16	2	20,0	420	4	CAN-DB-SS-192	
216	12	18	0	20,0	420	4	CAN-DB-SS-216	

Note: Central Strength member is FRP (Fiber Reinforced Plastic), but steel wire is also available on customer request.
 (*) Other delivery length is available

Mechanical & Environmental Characteristics

Parameters

Tensile Strength IEC 60794-1-2-E1	Max Opr.	3.000 N 1.000 N
Bending Radius(mm) IEC 60794-1-2-E11	Dynamic Static	20xD 10xD
Crush Resistance IEC 60794-1-2-E3		4.000 N
Impact Resistance IEC-60794-1-2-E4		50 N
Operation Temperature IEC 60794-1-2-F1	Installing Operating	-30 +60 (°C) -40 +80 (°C)
Water Penetration IEC 60794-1-2 F5	24 hour, 1 meter	No leakage



Identification of Optical Fiber and Loose Tube

No	1	2	3	4	5	6	7	8	9	10	11	12
Fiber	Yellow	Orange	Green	Red	Yellow	Violet	Brown	Black	White	Grey	Turquoise	Pink
Tubes	Yellow	Orange	Green	Red	Yellow	Violet	Brown	Black	White	Grey	Turquoise	Pink

Duct Type Single Sheathed Fiber Optic Cables

- ✓ Loose tube designed.
- ✓ Duct type installation for highly reliable industrial applications.
- ✓ Applicable for outdoor and indoor applications, also it's designed to protect optical fiber for the unexpected mechanical and environmental conditions.
- ✓ Qualification and acceptance testing are performed to assure the optical cable's performance and durability in several environments.

Highlights

- ✓ Fiber counts up to 216
- ✓ High tensile strength design
- ✓ Fibers per loose tube 1-12
- ✓ Gel filled cable core for the water resistance
- ✓ Dry core design is also possible for water resistance in customer request
- ✓ Suitable for duct applications
- ✓ Colored fiber for the quick identification
- ✓ UV resistance for the outer Sheath
- ✓ High fiber count to diameter ratio
- ✓ Fully complied with Telcordia GR-20 and TIA/EIA standards
- ✓ Custom designs are available on request

Applications

- ✓ Telecommunication applications
- ✓ Video applications
- ✓ Distribution
- ✓ Long Haul Communication Systems
- ✓ Metropolitan Communication Systems



Cable Weight & Diameter

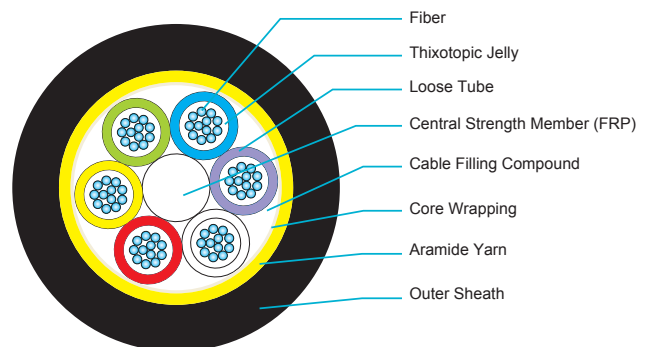
Item	Number of Fiber	Fiber Per Tube	Number of Tube	Number of Dummy Tube	Nom Outer Diameter mm	Nom Cable Weight Kg/km	Reel Length Km*	Part No
Duct Type Single Sheathed Optical Cables	4	2	2	4	11,0	100	6	CAN-DU-SS-004
	6	2	3	3	11,0	100	6	CAN-DU-SS-006
	12	2	6	0	11,0	100	6	CAN-DU-SS-012
	24	4	6	0	11,0	100	6	CAN-DU-SS-024
	36	6	6	0	11,0	100	6	CAN-DU-SS-036
	48	8	6	0	11,0	100	6	CAN-DU-SS-048
	60	12	5	1	11,0	100	6	CAN-DU-SS-060
	72	12	6	0	11,0	100	6	CAN-DU-SS-072
	96	12	8	0	12,5	140	4	CAN-DU-SS-096
	144	12	12	0	15,5	195	4	CAN-DU-SS-144
	192	12	16	2	15,5	210	4	CAN-DU-SS-192
216	12	18	0	15,5	210	4	CAN-DU-SS-216	

Note: Central Strength member is FRP (Fiber Reinforced Plastic), but steel wire is also available on customer request.
 (*) Other delivery length is available

Mechanical & Environmental Characteristics

Parameters

Tensile Strength IEC 60794-1-2-E1	Max Opr.	2.000 N 1.000 N
Bending Radius(mm) IEC 60794-1-2-E11	Dynamic Static	20xD 10xD
Crush Resistance IEC 60794-1-2-E3		2.000 N
Impact Resistance IEC-60794-1-2-E4		50 N
Operation Temperature IEC 60794-1-2-F1	Installing Operating	-30 +60 (°C) -40 +80 (°C)
Water Penetration IEC 60794-1-2 F5	24 hour, 1 meter	No leakage



Identification of Optical Fiber and Loose Tube

No	1	2	3	4	5	6	7	8	9	10	11	12
Fiber	Blue	Orange	Green	Red	Yellow	Violet	Brown	Black	White	Grey	Turquoise	Pink
Tubes	Blue	Orange	Green	Red	Yellow	Violet	Brown	Black	White	Grey	Turquoise	Pink

Central Tube Armored Double Sheathed Optical Cables

- ✓ Applied to outdoor and directly buried installation
- ✓ Designed for outdoor and direct buried type application and also to protect optical fiber for the unexpected mechanical and environmental conditions.
- ✓ Qualification and acceptance testing are performed to assure the optical cable's performance and durability in several environments.

Highlights

- ✓ Fiber counts up to 12
- ✓ Light weight
- ✓ High tensile strength design
- ✓ Dry core design
- ✓ Small diameter
- ✓ Colored fiber for the quick identification
- ✓ UV resistance for the outer sheath
- ✓ Fully complies with international standards, TIA/EIA
- ✓ Customer designs are available on request

Applications

- ✓ Building interconnection
- ✓ Campus and Local Area Network



Cable Weight & Diameter

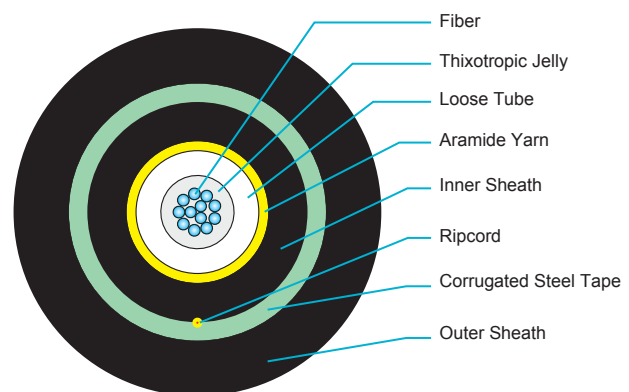
Item	Number of Tube	Nom Outer Diameter mm	Nom Cable Weight Kg/km	Reel Length Km*	Part No
Central Tube Armored Double Sheathed Optical Cables	2	10,5	110	2	CAN-CA-DS-002
	4	10,5	110	2	CAN-CA-DS-004
	6	10,5	110	2	CAN-CA-DS-006
	8	10,5	110	2	CAN-CA-DS-008
	10	10,5	110	2	CAN-CA-DS-010
	12	10,5	110	2	CAN-CA-DS-012

(*) Other delivery length is available

Mechanical & Environmental Characteristics

Parameters

Tensile Strength IEC 60794-1-2-E1	Max Opr.	3.000 N 600 N
Bending Radius(mm) IEC 60794-1-2-E11	Dynamic Static	20xD 10xD
Crush Resistance IEC 60794-1-2-E3		4.000 N
Impact Resistance IEC-60794-1-2-E4		50 N
Operation Temperature IEC 60794-1-2-F1	Installing Operating	-30 +60 (°C) -40 +80 (°C)
Water Penetration IEC 60794-1-2 F5	24 hour, 1 meter	No leakage



Identification of Optical Fiber and Loose Tube

No	1	2	3	4	5	6	7	8	9	10	11	12
Fiber	Blue	Orange	Green	Red	Yellow	Violet	Brown	Black	White	Grey	Turquoise	Pink
Tubes	Blue	Orange	Green	Red	Yellow	Violet	Brown	Black	White	Grey	Turquoise	Pink

Color of Louse tube is natural

Central Tube Unarmored Optical Cables

- ✓ Indoor/Outdoor type installation
- ✓ Designed for indoor/outdoor application to protect optical fiber for the unexpected mechanical and environmental conditions.
- ✓ Qualification and acceptance testing are performed to assure the optical cable's performance and durability in several environments.

Highlights

- ✓ Fiber counts up to 12
- ✓ Lightweight
- ✓ High tensile strength design
- ✓ Dry core design
- ✓ Small diameter
- ✓ Colored fiber for the quick identification
- ✓ UV resistance for the outer sheath
- ✓ Fully complies with international standards, TIA/EIA
- ✓ Customer designs are available on request

Applications

- ✓ Building interconnection
- ✓ Campus and Local Area network



Cable Weight & Diameter

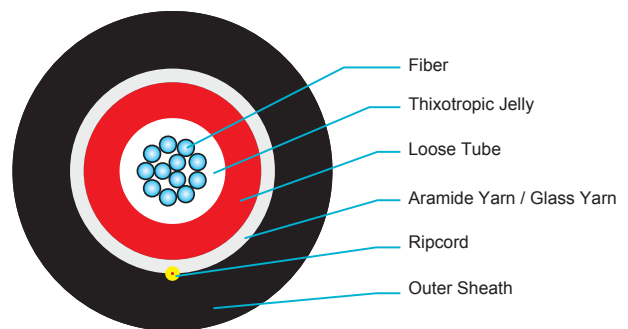
Item	Number of Tube	Nom Outer Diameter mm	Nom Cable Weight Kg/km	Reel Length Km*	Part No
Outdoor Central Tube Cables	2	8,0	60	4	CAN-CT-UA-002
Outdoor Central Tube Cables	4	8,0	60	4	CAN-CT-UA-004
Outdoor Central Tube Cables	6	8,0	60	4	CAN-CT-UA-006
Outdoor Central Tube Cables	8	8,0	60	4	CAN-CT-UA-008
Outdoor Central Tube Cables	10	8,0	60	4	CAN-CT-UA-010
Outdoor Central Tube Cables	12	8,0	60	4	CAN-CT-UA-012

(*) Other delivery length is available

Mechanical & Environmental Characteristics

Parameters

Tensile Strength IEC 60794-1-2-E1	Max Opr.	1.000 N 600 N
Bending Radius(mm) IEC 60794-1-2-E11	Dynamic Static	20xD 10xD
Crush Resistance IEC 60794-1-2-E3		00 N
Impact Resistance IEC-60794-1-2-E4		50 N
Operation Temperature IEC 60794-1-2-F1	Installing Operating	-30 +60 (°C) -40 +80 (°C)
Water Penetration IEC 60794-1-2 F5	24 hour, 1 meter	No leakage



Identification of Optical Fiber and Loose Tube

No	1	2	3	4	5	6	7	8	9	10	11	12
Fiber	Blue	Orange	Green	Red	Yellow	Violet	Brown	Black	White	Grey	Turquoise	Pink

Color of Louse tube is natural

Tight Tube Non-Metallic Optical Cables

Indoor/Outdoor type tight coated type optical cables are applied to indoor/outdoor installation. These types of cables are designed for indoor/outdoor application and also to protect optical fiber for the unexpected mechanical, environmental and rodent protection conditions. Qualification and acceptance testing are performed to assure the optical cable's performance and durability in several environments..

Highlights

- ✓ Fiber counts up to 12
- ✓ Light weight
- ✓ High tensile strength design
- ✓ Completely dry core design
- ✓ Small diameter
- ✓ Colored fiber for the quick identification
- ✓ UV resistance for the outer sheath
- ✓ Fully complies with international standards, TIA/EIA
- ✓ Customer designs are available on request

Applications

- ✓ Building interconnection
- ✓ Campus and Local Area Network



Cable Weight & Diameter

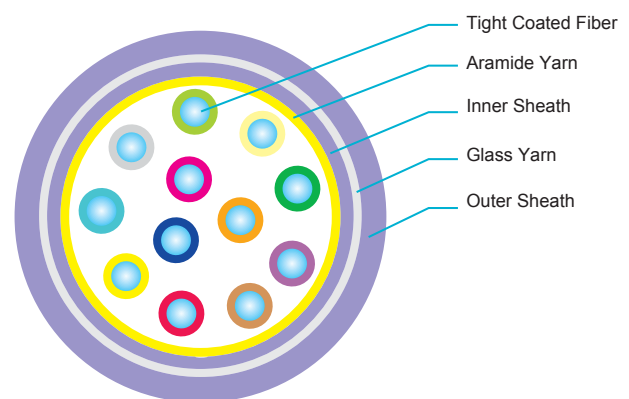
Item	Number of Tube	Nom Outer Diameter mm	Nom Cable Weight Kg/km	Reel Length Km*	Part No
Tight Coated Optical Cables	2	9,5	110	4	CAN-TT-NM-002
	4	9,5	110	4	CAN-TT-NM-004
	6	10,5	120	4	CAN-TT-NM-006
	8	11,0	135	4	CAN-TT-NM-008
	10	12,0	140	4	CAN-TT-NM-010
	12	12,5	150	4	CAN-TT-NM-012

(* Other delivery length is available

Mechanical & Environmental Characteristics

Parameters

Tensile Strength IEC 60794-1-2-E1	Max Opr.	1.000 N 600 N
Bending Radius(mm) IEC 60794-1-2-E11	Dynamic Static	20xD 10xD
Crush Resistance IEC 60794-1-2-E3		500 N
Impact Resistance IEC-60794-1-2-E4		50 N
Operation Temperature IEC 60794-1-2-F1	Installing Operating	-30 +60 (°C) -40 +80 (°C)
Water Penetration IEC 60794-1-2 F5	24 hour, 1 meter	No leakage



Identification of Optical Fiber and Loose Tube

No	1	2	3	4	5	6	7	8	9	10	11	12
Fiber	Blue	Orange	Green	Red	Yellow	Violet	Brown	Black	White	Grey	Turquoise	Pink

Color of Loose tube is natural

FTTH CABLES INDOOR USE

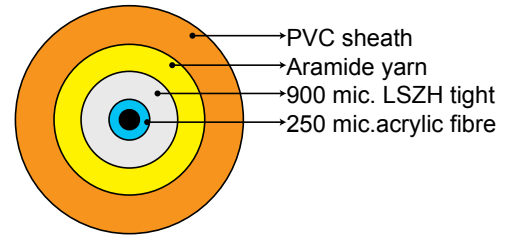
Bend Insensitive Drop Cables

This cable is made with G657 bend insensitive single mode optical fiber, using tight buffered structure fiber; Diameter is $0,87 \pm 0,05\text{mm}$, wall thickness is $0,31 \pm 0,02\text{mm}$

Highlights

- ✓ Tight buffered fibre of 900 µm diameter (Easy to strip)
- ✓ Non-metallic strength members (Aramide yarn)
- ✓ Completely dry core design
- ✓ Small diameter 2.0-3.0 [mm]
- ✓ All dielectric non-metallic construction, hence no ground loop problems

Part No CAN-BI-DC-1



FTTH Patch Cables

Highlights

- ✓ Tight buffered fibre of 900 µm diameter (Easy to strip)
- ✓ Non-metallic strength members (Aramide yarn)
- ✓ Completely dry core design
- ✓ Halogen Free Flame Retardant / Flame Retardant Non-Corrosive / Low Smoke Zero Halogen
- ✓ Small diameter 2.0 [mm]
- ✓ All dielectric non-metallic construction, hence no ground loop problems

Standards

IEC 61034 (low Smoke, zero halogen), IEC 60 332-3 (flame retardant), IEC 60754-2 (FRNC), DIN VDE0472 part 813 (FRNC)
 ITU-T G.651 (Multi Mode Fiber), ITU-T G.652; ITU-T G.657 (Single Mode Fiber), ITU-T G.655 & G.656 (NZDS Fiber)
 EN 187000:IEC 60794- 1&2, EN 188000:IEC 60793- 1&2 (Generic cable specifications)

Applications

Indoor interconnect and patch-cord installations



Duplex Zip Cable



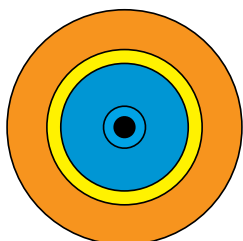
Splex Zip Cable

Product

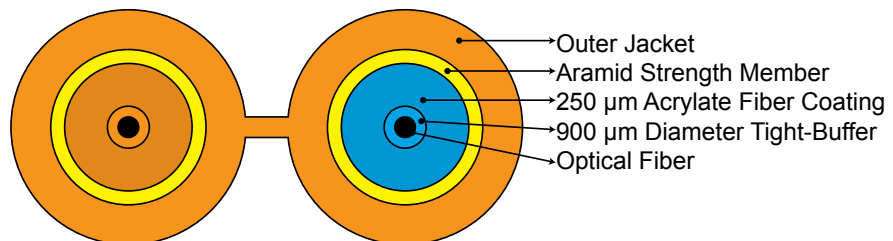
Simplex Zipcable
 Duplex Zipcable

Part No

CAN-PC-SZ-1
 CAN-PC-DZ-1



Simplex Zipcord



Duplex Zipcord

1U/2U 19" & ETSI Fiber Optic Patch Panel with Telescopic Rails CAN-FPP-100

Overview

Provides professional cable management and fiber termination with smooth telescopic pull-out rail system

Highlights

- ✓ 1U and 2U versions (12,24, 36 and 48 port capacity)
- ✓ Smooth and convenient mechanical sliding system
- ✓ Manages small & large quantities of fiber with a high packing density
- ✓ Cable glands to secure the incoming fiber, allows min movement
- ✓ Fiber guide tubes to protect and direct the fibers to the cassettes in a professional way
- ✓ Easy to maintain and extend
- ✓ Minimum bend radius of fibers and strain relief for all entry cables
- ✓ Fiber bend radius control of 35mm
- ✓ Capacity of up to 48 ports
- ✓ All known connector types such as SC, FC, ST, E2000, LC, MU etc. are possible)

Technical Details

Dimensions	(19") 465 mm (W) x 265 mm (D) x 1U (H)
Material	Mild Steel
Color	Powder coat RAL7035 or RAL9005
Weight	2 kg
Maximum Port Capacity	48 Ports

Applications

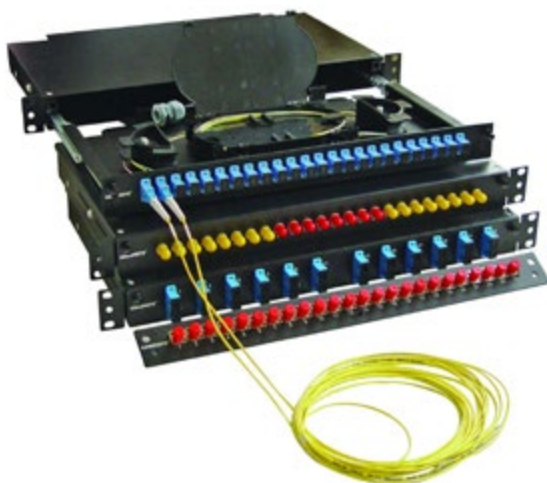
FTTX applications, Datacenter and LAN & WAN projects



Various Adapter Types



Incoming Cable Protection Tube



1U/2U 19" & ETSI Angled Patch Panels with Telescopic Rails CAN-FPP-200

Overview

Ensures professional cable management and limits the risk of health problems due to laser contact to eyes. Side facing fiber position for high laser safety.

Highlights

- ✓ 1U and 2U versions (12,24, 36 and 48 port capacity)
- ✓ Confirms 19" or ETSI
- ✓ Professional and advanced cable management with 45 degree adaptor interface
- ✓ Angled adaptor interface protects your eyes from undesired contact with laser beam coming from the adaptors-Laser safety!
- ✓ Quick-stud system ensures easy closing /opening of the front cover
- ✓ Easy access with Telescopic rail pull-out system
- ✓ Special Protection tubes and bend radien for protecting the incoming fiber from bending and guiding the fibers to the special designed splice cassettes in a professional way
- ✓ Special splice cassettes of 12 or 24 port capacity with professional cable storage and protection
- ✓ 100% Compatible to Bellcore GR-326 standards
- ✓ Conformity to every type of connectors (ST, SC, FC, LC, MTRJ, E2000, etc.)

Technical Details

Dimensions 465(W) x 238(D) x 88,15(H) 2U, 44,45 mm 1U

Material Mild Steel

Color Powder coat RAL7035 or RAL9005

Weight 6 kg (2U), 4 kg (1U)

Applications

FTTX applications, Datacenter and LAN & WAN projects

1U Version



2U Version



Secured cable entry



Telescopic Rail System



1U 19" & ETSI Telescopic Fiber Optic Patch Panel with Cable Manager CAN-FPP-500

Overview

Ensures professional cable management and ease of fiber termination with front cable manager for patchcords

Highlights

- ✓ 1U version (12 and 24 port capacity)
- ✓ Telescopic rail system with front cable management for patchcords
- ✓ Manages small & large quantities of fiber with a high packing density
- ✓ Cable glands to secure the incoming fiber, allows min movement
- ✓ Fiber guide tubes to protect and direct the fibers to the cassettes in a professional way
- ✓ Minimum bend radius of fibers and strain relief for all entry cables
- ✓ Fiber bend radius control - < 35mm
- ✓ All known connector types such as SC, FC, ST, E2000, LC, MU etc. are possible.

Technical Details

Dimensions	(19") 465 mm (W) x 280 mm (D) x 1U (H)
Material	Mild Steel
Color	Powder coat RAL7035 or RAL9005
Weight	2 kg
Maximum Port Capacity	48 Ports

Applications

FTTX applications, Datacenter and LAN & WAN projects



Inside view

1U/2U 19" & ETSI Fiber Optic Patch Panel with Mechanical Sliding Mechanism CAN-FPP-300

Overview

Provides professional cable management and ease of fiber termination with a cost effective mechanical pull-out mechanism

Highlights

- ✓ 1U and 2U versions (12,24, 36 and 48 port capacity)
- ✓ Smooth and convenient mechanical sliding system
- ✓ Manages small & large quantities of fiber with a high packing density
- ✓ Cable glands to secure the incoming fiber, allows min movement
- ✓ Fiber guide tubes to protect and direct the fibers to the cassettes in a professional way
- ✓ Minimum bend radius of fibers and strain relief for all entry cables
- ✓ Fiber bend radius control - < 35mm
- ✓ Capacity of up to 48 ports
- ✓ All known connector types such as SC, FC, ST, E2000, LC, MU etc. are possible.

Technical Details

Dimensions	(19") 465 mm (W) x 280 mm (D) x 1U (H)
Material	Mild Steel
Color	Powder coat RAL7035 or RAL9005
Weight	2 kg
Maximum Port Capacity	48 Ports

Applications

FTTX applications, Datacenter and LAN & WAN projects



1U/2U 19" & ETSI Fixed Fiber Optic Patch Panel CAN-FPP-400

Overview

Ensures professional cable management and ease of fiber termination in a cost effective way

Highlights

- ✓ 11U and 2U versions (12,24, 36 and 48 port capacity)
- ✓ Cost effective non-pull out system for budgetary applications
- ✓ Manages small & large quantities of fiber with a high packing density
- ✓ Cable glands to secure the incoming fiber, allows min movement
- ✓ Fiber guide tubes to protect and direct the fibers to the cassettes in a professional way
- ✓ Minimum bend radius of fibers and strain relief for all entry cables
- ✓ Fiber bend radius control - < 35mm
- ✓ Capacity of up to 48 ports
- ✓ All known connector types such as SC, FC, ST, E2000, LC, MU etc. are possible.

Technical Details

- Dimensions** (19") 465 mm (W) x 280 mm (D) x 1U (H)
- Material** Mild Steel
- Color** Powder coat RAL7035 or RAL9005
- Weight** 2 kg
- Maximum Port Capacity** 48 Ports

Applications

FTTX applications, Datacenter and LAN & WAN projects



Miscellaneous Fiber Patch Panels

19" 1U Fiber Patch Panel 12 Port SC Simplex with Telescopic Rail



19" 1U Fiber Patch Panel 24 Port SC Simplex



19" 1U Fiber Patch Panel 24 Port SC Duplex with Telescopic Rail



19" 1U Fiber Patch Panel 24 Port SC Simplex with Telescopic Rail



19" 1U Fi Fiber Patch Panel 24 Port SC Duplex Fixed



19" 1U Fiber Patch Panel 24 Port MTRJ Duplex with Sliding Rail



19" 1U Fiber Patch Panel 24 Port MTRJ Duplex with Sliding Rail



19" 1U Fiber Patch Panel 24 Port ST Simplex with Sliding Rail



How to order fiber patch panels?

CAN-FPP-X00-XX-AA-BBB-CC-DD-EE					
Model Number of CAN-FPP Series Patch Panels	Port Capacity XX	Adapter/Coupler Type AA	Mode/Type BB	Pigtails CC	Splice Cassette DD
CAN-FPP-100: 19" 1U Fiber patch panel with telescopic rails	06: 06 Fiber 12: 12 Fiber 24: 24 Fiber	01:ST 02: SC/PC 03: SC/APC	SS: Single Mode Simplex SD: Single Mode Duplex	01:ST 02: SC/PC 03: SC/APC	01:with splice cassette and cable management tools
CAN-FPP-200: 19" 1U Angled Fiber patch panel with telescopic rails	48: 48 Fiber	04: FC 05: LC	MS: Multi Mode Simplex MD: Multi Mode Duplex	04: FC 05: LC/PC	00: without splice cassette and management tools
CAN-FPP-300: 19" 1U Fiber patch panel with mechanical sliding mechanism		06: MTRJ 07: E2000		06: LC/APC 07: E2000 08: DIN 09: MTRJ	
CAN-FPP-400: 19" 1U Fixed Fiber patch panel					
CAN-FPP-500: 19" 1U Telescopic Fiber patch panel with Cable Manager					
CAN-FPP-100-024-02-SD-02-01	19" 1U Fiber Patch Panel with telescopic rail including 24 port SC Duplex adapters with single mode pigtails and cassettes				

For different configurations please contact sales department...

1U 19" & ETSI Swing Type Fiber Optic Patch Panel CAN-PVT-50X

Overview

Ensures professional cable management and ease of fiber termination with front cable manager for patchcords

Highlights

- ✓ 1U version 24 ports capacity (up to 30 ports)
- ✓ Swing Out system with front cable management for patchcords
- ✓ Manages small & large quantities of fiber with a high packing density
- ✓ Cable glands to secure the incoming fiber, allows min movement
- ✓ Fiber guide tubes to protect and direct the fibers to the cassettes in a professional way
- ✓ Minimum bend radius of fibers and strain relief for all entry cables
- ✓ Fiber bend radius control - < 35mm
- ✓ All known connector types such as SC, FC, ST, E2000, LC, MU etc. are possible.

Density Information

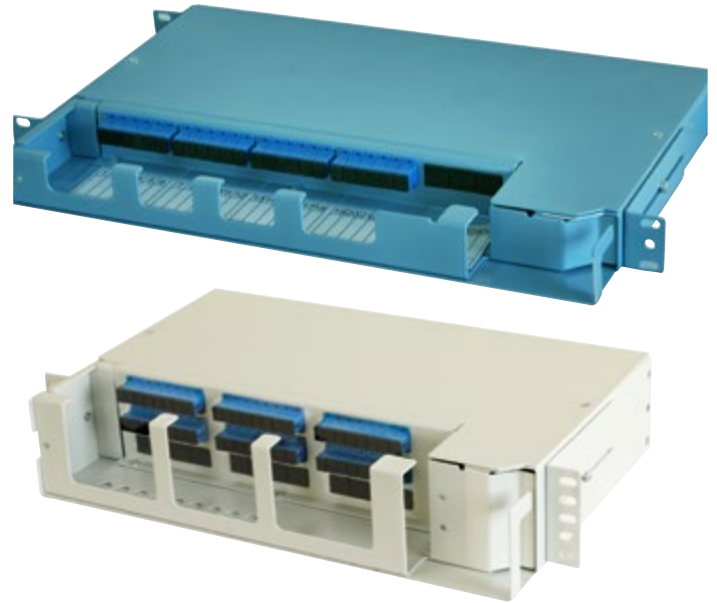
1U 24 ports Module: 24 pieces SC/LC/FC/ST/E200/DIN/MU-PC/APC etc. simplex adapters and 24 pieces 1.5 m SC/LC/FC/ST/E200/DIN/MU-PC/APC simplex pigtail (confirms G652, G652D standards)

Applications

Fiber Transmission Networks in Telco's Central applications, Fiber exchange systems, Utility Networks

Technical Details

Dimensions	430 mm (W) x 280 mm (D) x 1U (H)
Compliance	GR-449-core of Telcordia Specification
Finish	Powder coat RAL7032
Weight	1U : 2.1 kg, 2U : 2.8 kg
Material	Aluminum



Assos Pivot Type ODF Module CAN-ASO-100

Overview

Ultimate new design with the most advanced splice&patch system and cable management ever developed for high density applications on carrier&transmission side.

Highlights

- ✓ 1U option for different fiber capacities (2U option is available)
- ✓ Modular designed for 19"/ETSI optical distribution frames
- ✓ Pivot (Swing) type sliding Aluminum module system provides easy access
- ✓ Module provide max fiber termination possibility with superior cable management
- ✓ Magnetic lock system ensures easy closing/opening of the unit up to 24 port capacity
- ✓ Ensures minimal cable movement
- ✓ 24 port capacity fiber trays are used inside
- ✓ Cable glands are used to protect and fix incoming and outgoing fibers
- ✓ Incoming cable protection tube inside
- ✓ Unflammable plastic cassettes are used inside
- ✓ SC, LC, FC, ST, MTRJ, E-2000 interfaces etc available

Density Information

1U 24 port Module: 12 pieces SC/APC Duplex adapters and 24 pieces 1.5 m SC/APC simplex pigtail (confirms G652, G652D standards)

Applications

Fiber Transmission Networks in Telco's Central applications, Fiber exchange systems, Utility Networks

Technical Details

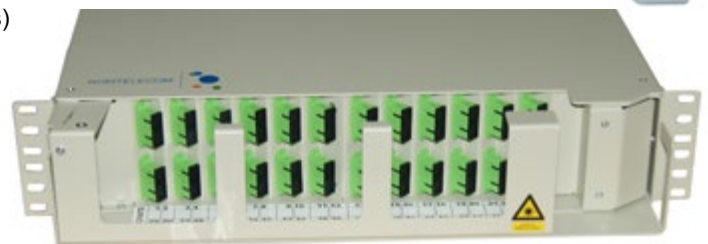
Dimensions	485 mm (W) x 260 mm (D) x 1U (H)
Compliance	GR-449-core of Telcordia Specification
Finish	Powder coat RAL7032
Weight	1.5 kg
Material	Aluminum



1U Module



Inside View



2U Module

Fiber Optic Patch Panel with Front Cable Guide CAN-FPP-50X

Overview

CAN-FPP-80X ensures professional cable management and splice&patch possibility for ribbon and non-ribbon fibers.

Highlights

- ✓ 1U and 2U versions (12,24, 36 and 48 port capacity)
- ✓ Confirms 19" or ETSI installations
- ✓ Professional and advanced cable management
- ✓ Front cable management and guides for patchcords
- ✓ Proper labeling on the front and cassettes
- ✓ Quick-stud system ensures easy closing /opening of the unit
- ✓ Easy access with slide-in pull-out system
- ✓ Cable entry from the rear and sides
- ✓ Special Protection tubes and bend radien for protecting the incoming fiber from bending and guiding the fibers to the special designed splice cassettes in a professional way
- ✓ Special splice cassettes of 12 or 24 port capacity with professional cable storage and protection
- ✓ Suitable for ribbon and non-ribbon cables
- ✓ 100% Compatible to Bellcore GR-326 standards
- ✓ Conformity to every type of connectors (ST, SC, FC, LC, MTRJ, E2000, etc.)



Rear and side cable entry

Technical Details

Dimensions 465 mm (W) x 272 mm (D) x 88,15 mm (H) 2U, 44,45 mm 1U

Material Mild Steel, 1,5 mm

Color Powder- Coated Median Grey NCS 2502B

Weight 4 kg (1U)

Applications

FTTX applications, Datacenter and LAN &WAN projects



Inside view and cable management

Adaptor Type	Fiber Capacity	Product code
FC/APC Simplex	24	CAN-FPP-501
SC/APC Simplex	24	CAN-FPP-502
FC/APC Simplex High Density	44	CAN-FPP-503
SC/APC Simplex High Density	36	CAN-FPP-504
LC/APC Simplex	24	CAN-FPP-505



Bottom view with cable storage&management

PIGTAILS

Canovate pigtails are available with different buffer and jacket types and colors, including bare fibers (250 microns), tight buffers (900 microns) or jacketed minicables in simplex or duplex (zip-cord) constructions.

SC Pigtails

Part No	Type
KSM-0-PGSXYYY-0-SC09uu-t	yyy meter SC/uu SM Fiber Pigtail, 0.9 mm , t
KMM-0-PGSXYYY-0-SC09uu-t	yyy meter SC/uu MM Fiber Pigtail, 0.9 mm , t

yyy : Available lengths in meter 0.5/1/1.5/2,3

uu: "AP" APC

t : Available colors (0: White, 1:Beige, 2:Black, 3:Red, 4:Green, 5:Blue, 6:Yellow, 7:Orange)

LC Pigtails

Part No	Type
KSM-0-PGSXyyy-0-LC09uu-t	yyy meter LC/uu SM Fiber Pigtail, 0.9 mm , t
KMM-0-PGSXyyy-0-LC09uu-t	yyy meter LC/uu MM Fiber Pigtail, 0.9 mm , t

yyy : Available lengths in meter 0.5/1/1.5/2,3

uu: "AP" APC

t : Available colors (0: White, 1:Beige, 2:Black, 3:Red, 4:Green, 5:Blue, 6:Yellow, 7:Orange)

ST Pigtails

Part No	Type
KSM-0-PGSXyyy-0-ST09uu-t	yyy meter ST/uu SM Fiber Pigtail, 0.9 mm , t
KMM-0-PGSXyyy-0-ST09uu-t	yyy meter ST/uu MM Fiber Pigtail, 0.9 mm , t

yyy : Available lengths in meter 0.5/1/1.5/2,3

uu: "AP" APC

t : Available colors (0: White, 1:Beige, 2:Black, 3:Red, 4:Green, 5:Blue, 6:Yellow, 7:Orange)

FC Pigtails

Part No	Type
KSM-0-PGSXyyy-0-FC09uu-t	yyy meter FC/uu SM Fiber Pigtail, 0.9 mm , t
KMM-0-PGSXyyy-0-FC09uu-t	yyy meter FC/uu MM Fiber Pigtail, 0.9 mm , t

yyy : Available lengths in meter 0.5/1/1.5/2,3

uu: "AP" APC

t : Available colors (0: White, 1:Beige, 2:Black, 3:Red, 4:Green, 5:Blue, 6:Yellow, 7:Orange)

E2000 Pigtails

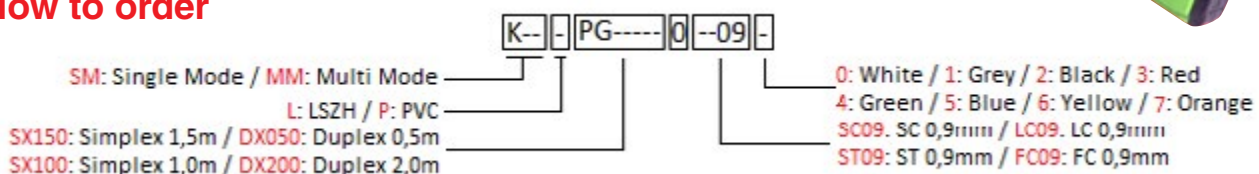
Part No	Type
KSM-0-PGyyy-0-E209uu-t	yyy meter E2000/uu Single Mode Pigtail, 0.9 mm, t
KMM-0-PGyyy-0-E209uu-t	yyy meter E2000/uu Multi Mode Pigtail, 0.9 mm, t

yyy : Available lengths in meter 0.5/1/1.5/2,3

uu: "AP" APC

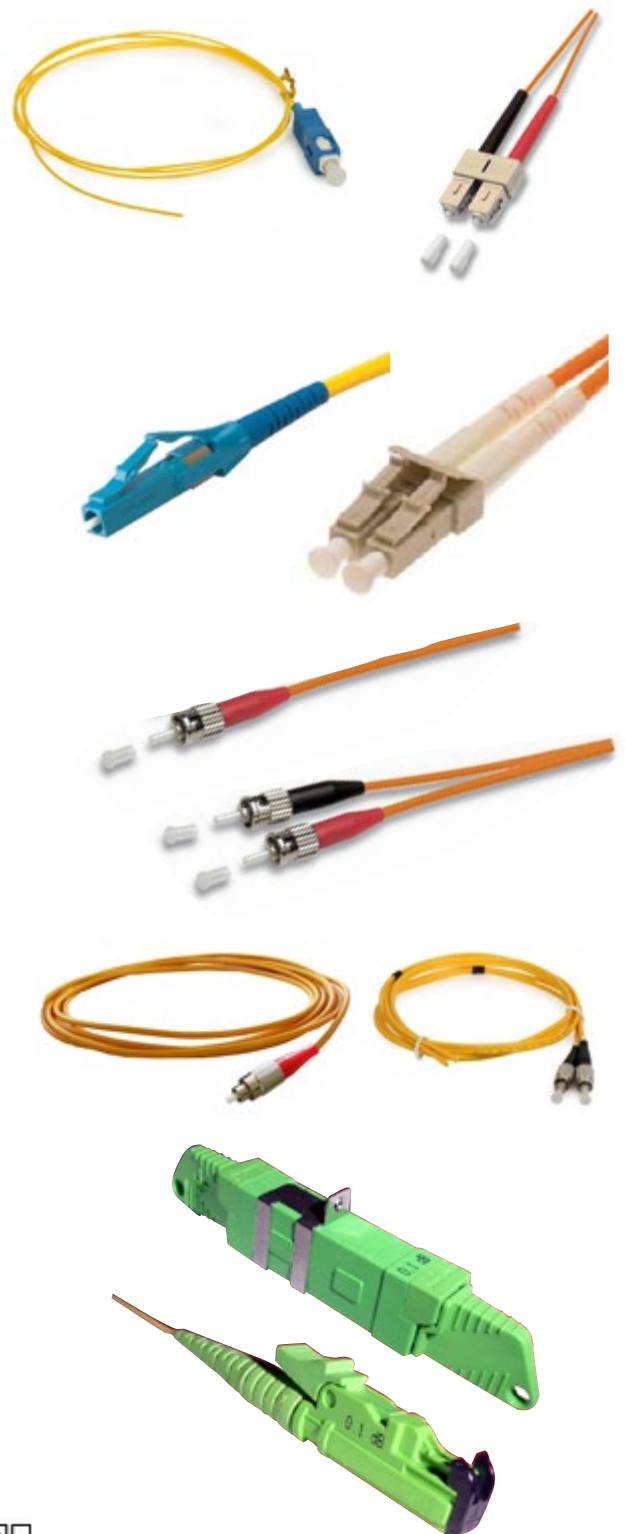
t : Available colors (0: White, 1:Beige, 2:Black, 3:Red, 4:Green, 5:Blue, 6:Yellow, 7:Orange)

How to order



Order Example:

KSM-L-PGSX100-0-SC09-6: Single Mode 1m SC Simplex Pigtail, LSZH, Yellow, 0.9mm





PATCH CORDS

Canovate patch cords are outstanding with different buffer and jacket types and colors, including out diameter (2-3 mm), tight buffers or jacketed minicables in simplex or duplex (zip-cord) constructions.

SC Patch Cords

Part No	Type
KSM-x-PCSxyyy-0-SCzzuu-t	yyy meter SC-zz/uu Simplex SM Fiber Patch Cord, x, t
KSM-x-PCDXxyyy-0-SCzzuu-t	yyy meter SC-zz/uu Duplex SM Fiber Patch Cord, x, t
KMM-x-PCSxyyy-0-SCzzuu-t	yyy meter SC-zz/uu Simplex MM Fiber Patch Cord, x, t
KMM-x-PCDXxyyy-0-SCzzuu-t	yyy meter SC-zz/uu Duplex MM Fiber Patch Cord, x, t



LC Patch Cords

Part No	Type
KSM-x-PCSxyyy-0-LCzzuu-t	yyy meter LC-zz/uu Simplex SM Fiber Patch cord, x, t
KSM-x-PCDXxyyy-0-LCzzuu-t	yyy meter LC-zz/uu Duplex SM Fiber Patch cord, x, t
KMM-x-PCSxyyy-0-LCzzuu-t	yyy meter LC-zz/uu Simplex MM Fiber Patch cord, x, t
KMM-x-PCDXxyyy-0-LCzzuu-t	yyy meter LC-zz/uu Duplex MM Fiber Patch cord, x, t



ST Patch Cords

Part No	Type
KSM-x-PCSxyyy-0-STzzuu-t	yyy meter ST-zz/uu Simplex SM Fiber Patch cord, x, t
KSM-x-PCDXxyyy-0-STzzuu-t	yyy meter ST-zz/uu Duplex SM Fiber Patch cord, x, t
KMM-x-PCSxyyy-0-STzzuu-t	yyy meter ST-zz/uu Simplex MM Fiber Patch cord, x, t
KMM-x-PCDXxyyy-0-STzzuu-t	yyy meter ST-zz/uu Duplex MM Fiber Patch cord, x, t



FC Patch Cords

Part No	Type
KSM-x-PCSxyyy-0-FCzzuu-t	yyy meter FC-zz/uu Simplex SM Fiber Patch cord, x, t
KSM-x-PCDXxyyy-0-FCzzuu-t	yyy meter FC-zz/uu Duplex SM Fiber Patch cord, x, t
KMM-x-PCSxyyy-0-FCzzuu-t	yyy meter FC-zz/uu Simplex MM Fiber Patch cord, x, t
KMM-x-PCDXxyyy-0-FCzzuu-t	yyy meter FC-zz/uu Duplex MM Fiber Patch cord, x, t



E2000 Patch Cords

Part No	Type
KSM-x-PCSxyyy-0-FCzzuu-t	yyy meter FC-zz/uu Simplex SM Fiber Patch cord, x, t
KSM-x-PCDXxyyy-0-FCzzuu-t	yyy meter FC-zz/uu Duplex SM Fiber Patch cord, x, t
KMM-x-PCSxyyy-0-FCzzuu-t	yyy meter FC-zz/uu Simplex MM Fiber Patch cord, x, t
KMM-x-PCDXxyyy-0-FCzzuu-t	yyy meter FC-zz/uu Duplex MM Fiber Patch cord, x, t



x: "L" LSZH / "P" PE

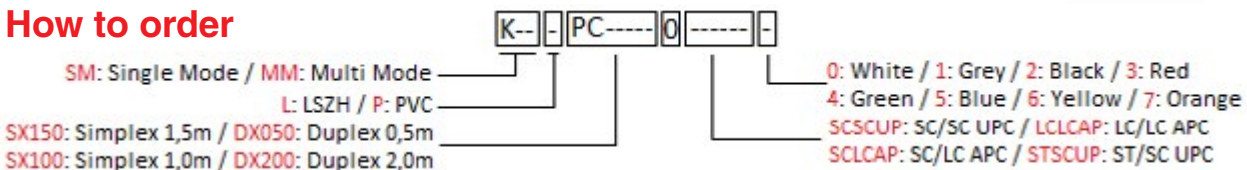
yyy: Available lengths in meter 0.5/1/1.5/2,3,5 and 10 (up to 70m special)

zz: SC:SC / LC:LC / ST:ST / MJ: MT-RJ / FC: FC

uu: "AP" APC / "UP" UPC

t: Available colors (0: White, 1:Beige 2:Black, 3:Red, 4:Green, 5:Blue, 6:Yellow, 7:Orange)

How to order



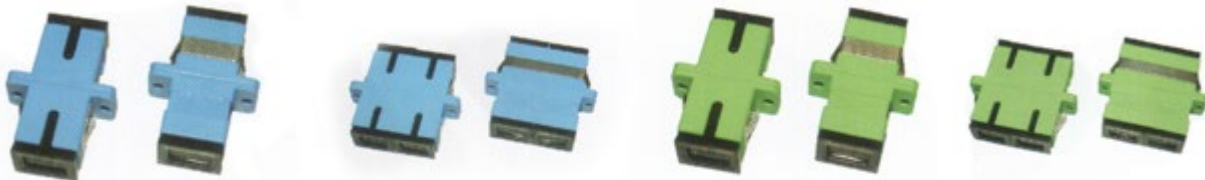
Order Example:

KMM-L-PCDX150-0-SCLCAP-7: Multi Mode 1.5m SC/LC UPC Duplex Patch Cord, LSZH, Orange, 2mm

ADAPTERS

Canovate fiber optic adapters are compatible with all fiber types including singlemode (9/125 microns), multimode (50/125 microns) fibers. Canovate components comply with both major industry standards, ANSI/TIA/EIA 568-B.3 and IEC 60874 providing a full range of connectors and adapters, offering a user-friendly solutions in the vertical and horizontal environments.

SC Adapters



SC Single mode simplex

SC Single mode duplex

SC/APC Single mode simplex

SC/APC Single mode duplex

Part No	Type
KSM-0-ADXS-0-SC-5	SC type FO adapter SM Simplex, Blue
KSM-0-ADDX-0-SC-5	SC type FO adapter SM Duplex, Blue
KSM-0-ADXS-0-SCAP-4	SC/APC type FO adapter SM Simplex, Green
KSM-0-ADDX-0-SCAP-4	SC/APC type FO adapter SM Duplex, Green
KMM-0-ADXS-0-SC-1	SC type FO adapter MM Simplex, Beige
KMM-0-ADDX-0-SC-1	SC type FO adapter MM Duplex, Beige

MT-RJ / FC / MU / DIN connectors and adapters are available

LC Adapters



LC Single mode simplex

LC Single mode duplex

LC Multi mode simplex

LC Multi mode duplex

Part No	Type
KSM-0-ADXS-0-LC-5	LC type FO adapter SM Simplex, Blue
KSM-0-ADDX-0-LC-5	LC type FO adapter SM Duplex, Blue
KMM-0-ADXS-0-LC-1	LC type FO adapter MM Simplex, Beige
KMM-0-ADDX-0-LC-1	LC type FO adapter MM Duplex, Beige

MT-RJ / FC / MU / DIN connectors and adapters are available

ST Adapters



ST Single mode simplex

ST Multi mode simplex

Part No	Type
KSM-0-ADXS-0-ST-2	ST type FO adapter SM Simplex, Black
KSM-0-ADXS-0-ST-3	ST type FO adapter MM Simplex, Red

MT-RJ / FC / MU / DIN connectors and adapters are available

FC Adapters



FC Single mode simplex

FC Multi mode simplex

Part No	Type
KSM-0-ADXS-0-FC-0	FC type FO adapter SM Simplex, White
KSM-0-ADXS-0-FC-0	FC type FO adapter MM Simplex, White

MT-RJ / FC / MU / DIN connectors and adapters are available

E2000 Adapters

Part No	Type
KSM-0-ADXS-0-E2-4	E2000 type FO adapter SM Simplex, Green
KSM-0-ADXS-0-E2-1	E2000 type FO adapter MM Simplex, Beige

MT-RJ / FC / MU / DIN connectors and adapters are available



E2000 Single Mode Simplex

E2000 Multi Mode Simplex

CONNECTORS

Fiber Optic Connector is an important components used in the fiber optic network. It is also the key part used in fiber optic patch cord and fiber optic pigtail. There are many kinds of fiber optic connectors. we supply one piece fiber optic connectors various types, including standard connectors and irregular types, epoxy types. we supply fiber optic types include: SC fiber optic connector, FC fiber optic connector, ST fiber optic connector, LC fiber optic connector, MU fiber optic connector, SC/APC fiber optic connector, FC/APC fiber optic connector, etc. both single mode fiber optic connector and multimode fiber optic connector available.

- ✓ Single mode, multimode available
- ✓ All connectors with dusty cap
- ✓ Compliant with RoHS requirement

SC Connectors

SC Single Mode, Simplex



SC Single Mode, Duplex



SC Multi Mode, Simplex



SC Multi Mode, Duplex



Part No	Type
KSM-0-CNSX-0-SC-5	SC type FO connector SM Simplex, Blue
KSM-0-CNDX-0-SC-5	SC type FO connector SM Duplex, Blue
KSM-0-CNSX-0-SCAP-4	SC/APC type FO connector SM Simplex, Green
KSM-0-CNDX-0-SCAP-4	SC/APC type FO connector SM Duplex, Green
KMM-0-CNSX-0-SC-1	SC type FO connector MM Simplex, Beige
KMM-0-CNDX-0-SC-1	SC type FO connector MM Duplex, Beige

SC/APC Single Mode, Simplex



MT-RJ / FC / MU / DIN connectors and adapters are available

LC Connectors

LC Single Mode, Simplex



LC Single Mode, Duplex



LC Multi Mode, Simplex



LC Multi Mode, Duplex



Part No	Type
KSM-0-CNSX-0-LC-5	LC type FO connector SM Simplex, Blue
KSM-0-CNDX-0-LC-5	LC type FO connector SM Duplex, Blue
KMM-0-CNSX-0-LC-1	SC type FO connector MM Simplex, Beige
KMM-0-CNDX-0-LC-1	SC type FO connector MM Duplex, Beige

MT-RJ / FC / MU / DIN connectors and adapters are available

ST Connectors

ST Single Mode, Simplex



ST Multi Mode, Simplex



Part No	Type
KSM-0-CNSX-0-ST-6	ST type FO connector SM Simplex, Yellow
KMM-0-CNSX-0-ST-2	ST type FO connector MM Simplex, Black

MT-RJ / FC / MU / DIN connectors and adapters are available

FC Connectors

FC Single Mode, Simplex



FC/APC Single Mode, Simplex



Part No	Type
KSM-0-CNSX-0-FC-5	FC type FO connector SM Simplex, Blue
KMM-0-CNSX-0-FC-4	FC type FO connector MM Simplex, Green

MT-RJ / FC / MU / DIN connectors and adapters are available

E2000 Connector

Part No	Type
KSM-0-CNSX-0-E2-4	E2000 type FO connector SM Simplex, Green
KMM-0-CNSX-0-E2-1	E2000 type FO connector MM Simplex, Beige

MT-RJ / FC / MU / DIN connectors and adapters are available



E2000 Single Mode Simplex

Field Installable Connector

Field Installable Connector (FIC) is a perfect solution for field working and FTTH connection. It is widely used for where need to quick connection, providing a quickly assembling and stable performance. When engineers work in field for installation, maintenance, repair of optical fiber, or FTTH indoor terminate, they can use it easily because it has no epoxy, no polishing. FIC connector is designed inside ferrule with fiber stuff and pre-polishing in the factory. It provides a perfect ferrule endface quality. This has great help to protect user's equipment interface and improves the connector loss.

The Fast Connector (Field Assembly Connector or Quickly Assembly Fiber Connector) is a revolutionary field installable optical fiber connector that requires no epoxy, no polishing and no other specialized tools. The unique design of the patented mechanical splice body incorporates a factory-mounted fiber stub and a pre-polished ceramic ferrule.

- ✓ Available for 250µm, 900µm, 2.0mm and 3.0mm cables
- ✓ Complete with industry standard length Strain Relief Boot
- ✓ Cable Tensile test complies with Telcordia GR-326-CORE

Features

- ✓ No epoxy, no polishing, no adhesive, no electricity required
- ✓ Field installable, cost effective and user friendly
- ✓ Completely mechanical splice. No electricity required
- ✓ Can be assembled in the field in less than 1 minute
- ✓ Reliable and superior optical performance
- ✓ Connector has a fibre guide to aid insertion, and reduce installation error
- ✓ Only the basic Fibre termination tools are required
- ✓ Connector has fibre already inside, and a prepolished ferrule for superior results and reliable termination
- ✓ Complete with industry standard length Strain Relief Boot
- ✓ Cable Tensile test complies with Telcordia GR-326-CORE

Applications

- ✓ Optical Distribution Frame
- ✓ Optical Network Equipments
- ✓ FTTHs CATV



How to install

1 - Cutting Fiber



2 - Inserting Fiber



3 - Take Out Connector



4 - Add Boot and ready



Part No	Type
KSM-0-CNFISX-0-SC-5	SC type FO Field Installable connector SM Simplex, Blue
KSM-0-CNFISX-0-SCAP-4	SC/APC type FO Field Installable connector SM Simplex, Green
KMM-0-CNFISX-0-SC-0	SC type FO Field Installable connector MM Simplex, White
KSM-0-CNFISX-0-LC-5	LC type FO Field Installable connector SM Simplex, Blue
KSM-0-CNFISX-0-LCAP-4	LC/APC type FO Field Installable connector SM Simplex, Green
KMM-0-CNFISX-0-LC-0	LC type FO Field Installable connector MM Simplex, White

Single Mode Pre-Assembled Breakout (Drop Cable)

Each pre-terminated fiber assembly is delivered to the installer with the delicate fibers and connectors protected by a plastic tube. A pulling eye is attached to the strength members of the cable allowing full pulling force to be applied during installation without any risk to the optical fibers.

To assembly is ready to install, right down to the pre-fitted cable glands. Simply remove the pulling eye and protective tubes, feed the fibers into the rear of a sliding tray patch panel, tighten the cable gland to the rear of the panels and the installation is complete

Standart Configuration

Pre-terminated Assemblies are supplied as standard with protection sleeve, pulling eye and staggered distribution.

Alternative labeling options are available. Please Contact us with your requirements.

Assemblies are identified by a serial number

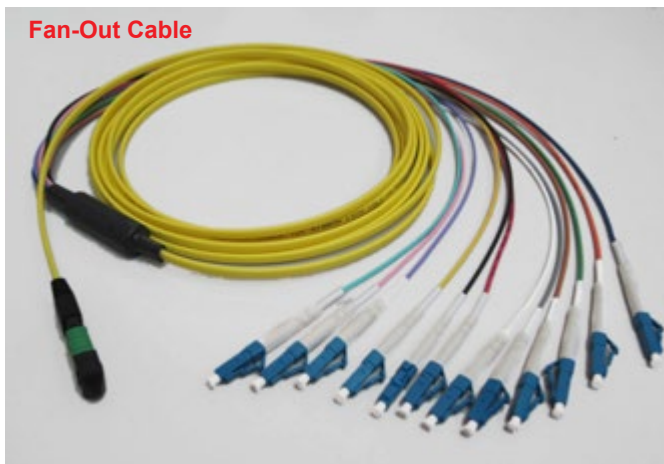


Standart Construction : Staggered

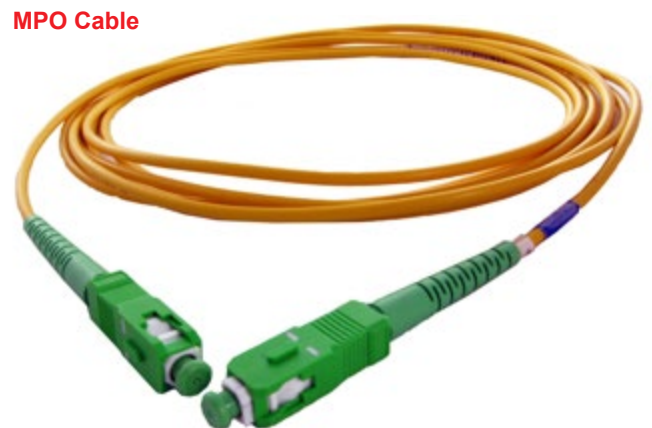
Special Construction : Fan-Out

Part No	Type
KSM-x-KK04PR-0-SC-1	4 core Single Mode Pre-terminated (SC) cable (9/125), Grey
KSM-x-KK08PR-0-SC-1	8 core Single Mode Pre-terminated (SC) cable (9/125), Grey
KSM-x-KK12PR-0-SC-1	12 core Single Mode Pre-terminated (SC) cable (9/125), Grey
KSM-x-KK12PR-0-SC-1	12 core SC Fanout cable (9/125), Grey
KSM-x-KK12PR-0-LC-1	12 core LC Fanout cable (9/125), Grey
K00-x-PPPR96-0-LC-2	96 Port Pre-terminated LC Fiber Patch Panel, Black
K00-x-PPPRMD-0-LC-2	Pre-terminated Modular LC Fiber Patch Panel, Black
KMM-x-KK12PR-0-0-2	12 core Multi Mode MTP Trunk cable (9/125), Black

x : "L" LSZH / "P" PVC
 MT-RJ / FC / MU / E2000 / DIN connectors and special designs are available



Fan-Out Cable



MPO Cable

ODF to ODF Example



You can connect two ODF Module with Pre-Terminated Fan Out Cable



MTP® Pre-Terminated Fiber Patch Panel CAN-MTP-100

MTP® 19" 1U Patchpanel Multimode OM3, 10Gbit/s, 144 ports

Canovate provides a high density 19" rack-mountable solution for next generation networks, which aims to provide and manage max number of fibers in a limited space.

MTP® patchpanel enables perfect and secured management of 144 fibers in 1U

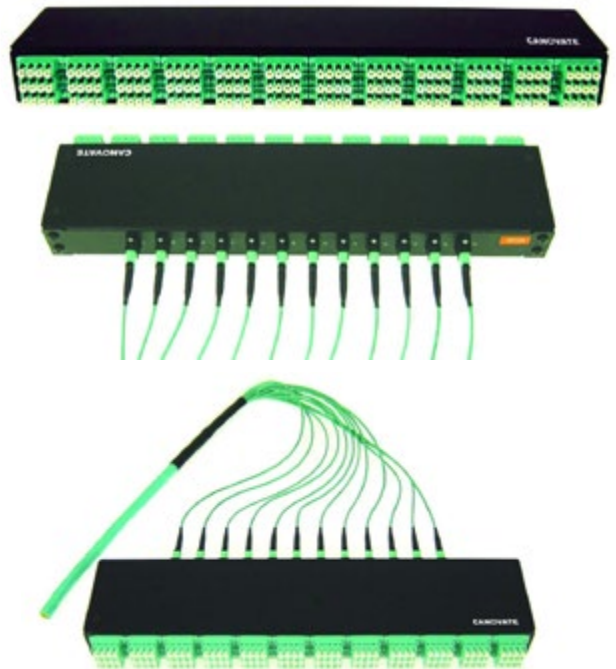
The connection between the 12 MTP® adaptors fixed on rear side of the panel and 36 pieces of 4-port LC adaptors on the front side are managed in a very intense way in this 1U patchpanel

Technical Details

- Dimensions** (19") (W) x 95 mm (D) x 1U (H)
- Material** Steel
- Color** Powder coat RAL7035 or RAL9005
- Adaptor Types**
 - Rear side: 12 X MTP®
 - Front side: 36 X 4-port LC (= 144 fibers)

Applications

Datacenter Storage area, MDU Distribution Terminal



MTP® Pre-Terminated Modular Fiber Patch Panel CAN-MTPM-100

MTP® 3U, 8 TE Multimode OM3, 10Gbit/s, 24 ports

MTP® Snap-in-module with 24 fiber capacity, modular structure allows to fit in various type of applications

The connection between the 2 MTP® adaptors on rear side of the module and 6 pieces of 4-port LC adaptors on the front side are managed in a very intense way in this module.

The connection between the 12 MTP® adaptors fixed on rear side of the panel and 36 pieces of 4-port LC adaptors on the front side are managed in a very intense way in this 1U patchpanel

Technical Details

- Dimensions** (19") (W) x 95 mm (D) x 1U (H)
- Material** Steel
- Color** Powder coat RAL7035 or RAL9005
- Adaptor Types**
 - Rear side: 2 X MTP®
 - Front side: 6 X 4-port LC (= 24 fibers)
 - Flexible&expandable



Plug in Module



MTP® Trunk Cable Multimode OM3, 10Gbit/s, up to 144 fibers

Preconfigured Trunk cable with 12 MTP® plugs for a very fast, easy and secured Plug and Play installation

Technical Details

- Plugs** : up to 12 MTP®-plugs (with 12 fiber/each)
- Fiber type** : Multimode OM3
- Cable length** : customer specific



RACK CONTROL UNIT (RCU)

Within the FUTURE-PATCH® system the Rack Control Unit (RCU) basically acts as a communication interface between the Panel Control Units and the Management Console. It translates the messages received from Panel Control Units in ethernet packets and forwards them to the Management Console. Furthermore, the Rack Control Unit powers up to 30 Panel Control Units via a bus cable. The display provides visual support during patching processes and informs about possible malfunctions.

Highlights

- ✓ Contactless identification of cables using innovative RFID technology
- ✓ Planning and real-time documentation of patch connections
- ✓ Manufacturer independent retrofit
- ✓ Compatible with copper and fibre optic components
- ✓ Increased efficiency of the IT manpower
- ✓ Improved system stability and significant reduction of system downtimes

Technical Details

- Dimensions** 483mm (19")(W), 260mm(D), 1U: 44,45mm(H)
Material Steel
Color RAL 7035
Text display 2 x 40 characters
Power supply Input voltage 230V, Output voltage: 15V,Current: 4A
Part Number CAN-RCU-1



PANEL CONTROL UNIT (PCU)

The Panel Control Units (PCUs) can be integrated into a variety of patch panels and switches in already existing networks. Several Panel Control Units are interconnected via a bus cable and attached to the Rack Control Unit. The installed PCUs permanently monitor all ports of the respective patch panels and switches. Changes of the patch state produce messages which are immediately sent to the Rack Control Unit and forwarded to the Management Console. The PCUs provide visual support using LEDs during the patch process ensuring the correct completion.

Highlights

- ✓ Contactless identification of cables using innovative RFID technology
- ✓ Planning and real-time documentation of patch connections
- ✓ Manufacturer independent retrofit
- ✓ Compatible with copper and fibre optic components
- ✓ Increased efficiency of the IT manpower
- ✓ Improved system stability and significant reduction of system downtimes



Order Information

Description		Part Number
1U Copper Patch panel, 24 x RJ45/LSA, Cat.6, shielded		CAN-PCU-1
1U Fiber Patch panel, Fixed installation 24 x LC/LC duplex		CAN-PCU-2
1U Copper Patch Panel, 24 x RJ45-MOD, Cat.6, shielded		CAN-PCU-2
1U Fiber Patch panel, drawer version 24 x SC/ST duplex		CAN-PCU-3
1U Fiber Patch panel, drawer version 24 x LC/LC duplex		CAN-PCU-3

Copper Patch Cable with RFID-Transponder

The highly screened RJ45 patch and equipment cables are utilised in twisted pair data networks and meet the standards ISO/IEC 11801:2002 and DIN EN 50173-1: 2007. The patch cables fully comply with the standards Category 6 and class E. Used together with high quality tertiary cabling, the patch cable can achieve a Class Ea channel link of up to 500MHz, according to the current draft standards ISO/IEC 11801 Amendment 1 and IEEE 802.3 an (10G BaseT). The injection moulded plug includes a pocket for the RFID transponder. The colour of the cable sheath, the injection moulded plug and the retrofittable latch protection can be chosen separately from six standard colours.

An additional security feature is the security plug which can be used to inhibit the connection of non identifiable standard patch cables by blocking all non patched RJ45 ports.

Highlights

- ✓ Contactless identification of cables using innovative RFID technology
- ✓ Planning and real-time documentation of patch connections
- ✓ Manufacturer independent retrofit
- ✓ Compatible with copper and fibre optic components
- ✓ Increased efficiency of the IT manpower
- ✓ Improved system stability and significant reduction of system downtimes

Technical Details

- ✓ RFID-transponder according ISO 15693
- ✓ Transponder size: W: 10,2mm D: 3,0mm H: 2,6mm
- ✓ Six standard colours: Moulded plug, Cable sheath, Latch protection
- ✓ Cable: TKM PK9 Cat. 7 4P AWG 27/7, Impedance 100 Ohm

Order Information

Description

Description	Part Number
1,0 m length	CAN-RF-CPC-1
2,0 m length	CAN-RF-CPC-2
3,0 m length	CAN-RF-CPC-3
FUTURE-PATCH Security Plug RJ45 with transponder	CAN-RF-CPC-S



Other lengths available on request

Fiber Patch Cable with RFID-Transponder

The Fibre Optic (FO) patch cables with LC or SC connectors are utilized in structurized communications networks according to ISO/IEC 11801 and DIN EN 50173. Canovate has developed and produced colorless duplex clips (LC or SC) containing a bag with a RFID transponder (factory programmed with an unique ID) which is identified by the port readers of the Panel Control Unit (PCU). The cables with duplex LC or SC connectors are available in different colors in any length and with different fibers (Singlemode 9/125; Multimode 62.5/125, and 50/125 OM2, OM3, OM3+, OM4). Patch cables with high return loss connectors (E2000; APC 8° or 9°) complete the range.

Highlights

- ✓ Contactless identification of cables using innovative RFID technology
- ✓ Planning and real-time documentation of patch connections
- ✓ Manufacturer independent retrofit
- ✓ Compatible with copper and fibre optic components
- ✓ Increased efficiency of the IT manpower
- ✓ Improved system stability and significant reduction of system downtimes

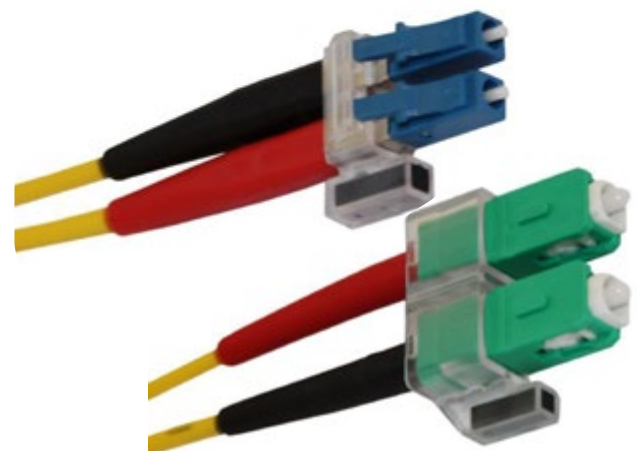
Technical Details

- ✓ Transponder: Read/Write, HF 13.56MHz according to ISO 15693
- ✓ Transponder size: W: 10.2mm D: 3.0mm H: 2.6mm
- ✓ Duplex-Zipcord, halogen free

Order Information

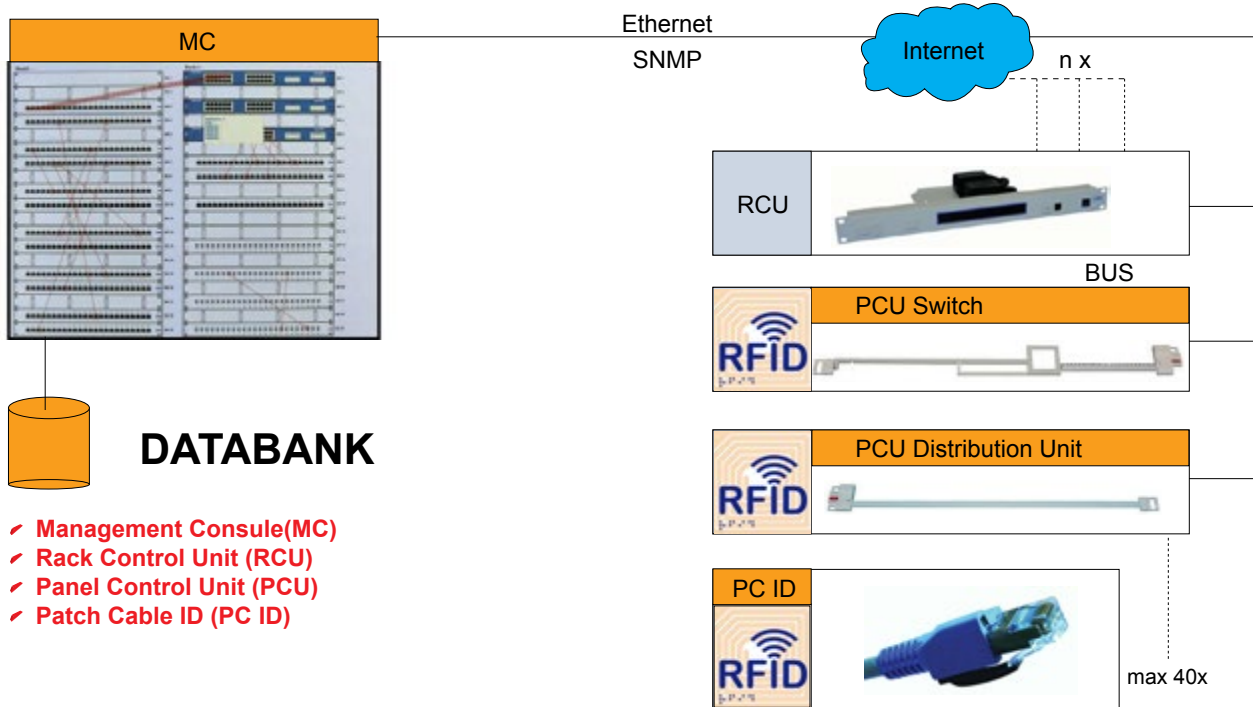
Description

Description	Part Number
LC-LC 2G50/125 OM2, Length 1 m	CAN-RF-FPC-1
LC-SC 2G62.5/125 OM1, Length 1 m	CAN-RF-FPC-2
SC APC 8°-SC 2E9/125 OS2, Length 1 m	CAN-RF-FPC-3
LC APC 8°-LC 2E9/125, OS2 Length 1m	CAN-RF-FPC-4

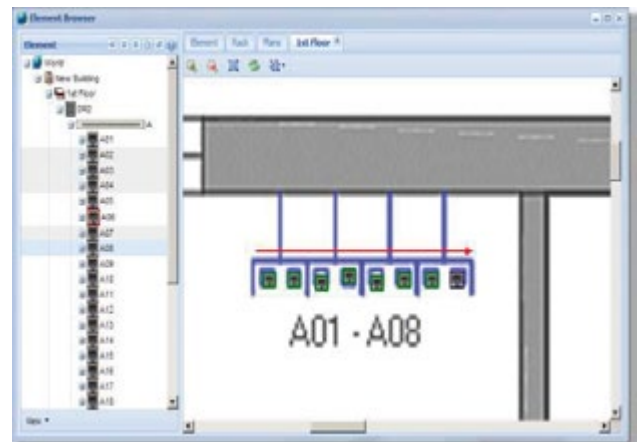
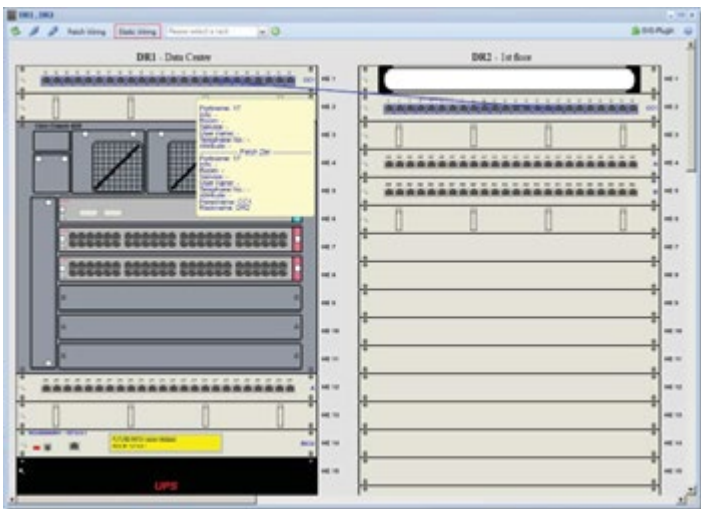


How FUTURE-PATCH works

The Management Console is an appealing and easy-to-use graphical interface which provides access to all features of the FUTURE-PATCH system. Using the Management Console, the desired patch jobs can be created and validated. Furthermore, real time monitoring of all unintended physical changes in the network infrastructure is possible. This is achieved by equipping all hardware components including but not restricted to passive panels and switches with intelligent RFID-readers (Panel Control Units). The Panel Control Unit permanently monitors all ports by scanning the RFID transponders integrated in the patch cables. It immediately reports all detected changes to the Management Console. The intended patch jobs as well as unintended changes are indicated using LEDs on the Panel Control Unit and as a clear text message in the Rack Control Unit display. The FUTURE-PATCH system has been designed for permanent monitoring of an unlimited number of racks, each one equipped with a single Rack Control Unit and up to 42 Panel Control Units.



We offer our customers the possibility to install FUTURE-PATCH on a large number of various patch panels and switches from different manufacturers. Therefore, device-specific Panel Control Units for a variety of existing components have been developed. Furthermore, a modular system has been designed which allows device-independent retrofitting on devices from various manufacturers. The main advantage of this modular system is the simple configuration of Panel Control Units with different port numbers and varying port geometry. This flexible approach gives the feasibility to create adequate FUTURE-PATCH components for a large number of already existing components as well as for future devices.



FUTURE-PATCH gives the user a detailed overview with regard to the use of resources from the installed network components. Furthermore, it establishes a sound basis for efficient optimization and IT security. FUTURE-PATCH can be integrated in many widely spread network management tools and documentation systems using a simple interface. In conjunction with further information from other sources and databases FUTURE-PATCH marks a milestone in network management and troubleshooting.

Dual Door Wall Mountable Optical Distribution Box CAN-ODB-20X

Overview

Canovate CAN-ODB-101 Optical Distribution box provides a flexible fiber management system for transitioning outside plant cable to inside cable and connectorized assemblies in high density applications. It provides a compact and versatile method of splicing and patching up to 24 fibers.

Highlights

- ✓ Indoor Wallmountable fiber distribution box for high density applications
- ✓ Dual doors with separate locking options for flexibility and security
- ✓ Very suitable for new and existing interconnect, cross connect and co-location environments
- ✓ Splicing and patching at the same box
- ✓ 4 cable entry glands to secure the fiber cables
- ✓ 12 or 24 port splice cassettes inside
- ✓ Modular structure expandable up to 24 splices and patches
- ✓ Modular interchangeable interfaces for all known connector types such as SC, FC, ST, E2000, LC, MU etc. are possible (extra FC adaptor plates inside)

Technical Details

Dimensions OSB (1:16 Splitter) : 250x300x100 (HXWXD)
 OSB (1:32 Splitter) : 300x400x100 (HXWXD)

Material Galvanized Steel, 1.5 mm

Color Powder coat RAL7035

Weight 3 kg (1U)

Applications

FTTX applications as indoor building distribution unit, LAN Networks



Single Element Management Splice Tray

Miscellaneous easy plug-in Adapter Plates



ORDER TABLE FOR DUAL WALLMOUNT OPTICAL DISTRIBUTION BOX			
Part Number Breakdown: CAN-ODB-100-XX ¹ -XX ² -XX ³ -XX ⁴ -XX ⁵			
XX ¹ : Fibre capacity	06 : 6 fibre	12 : 12 fibre	24 : 24 fibre
	48 : 48 fibre	96 : 96 fibre	144 : 144 fibre
XX ² : Adapter/coupler type	ST, LC, E2000, DIN SC, FC, etc..		
XX ³ : Cassette Type	SE : Single Element SC : Single Circuit		
XX ⁴ : Mode	SS: Single Mode Splex MS: Multi Mode Splex SD: Single Mode Duplex MD: Multi Mode Duplex		
XX ⁵ : FE	FE: Fully Equipped (pigtailed, adaptors, splice cassettes, cable management tools are included)		



96 Port LC Duplex with Single Element Cassette

Cable Glands



Cable Glands

Single Door Wall Mountable Optical Distribution Box CAN-ODB-200

Overview

Canovate FTTH box provides a flexible fiber management system for transitioning outside plant cable to inside cable and connectorized assemblies in low density applications. It provides a compact and versatile method of splicing and patching up to 96 fibers.

Highlights

- ✓ Indoor Wallmountable fiber distribution box for low density applications
- ✓ Dual doors with separate locking options for flexibility and security
- ✓ Very suitable for new and existing interconnect, crossconnect and co-location environments
- ✓ Splicing and patching at the same box
- ✓ Modular structure expandable to 96 splices and patches
- ✓ Modular interchangeable interfaces for all known connector types such as SC, FC, ST, E2000, LC, MU etc. are possible

Technical Details

Dimensions 285 mm (W) x 355 mm (D) x 65 mm (H)
(up to 24 port SC Duplex)

Material Mild Steel

Color Powder coat RAL7035

Weight 3,20 kg / empty (24 port SC Duplex)

Applications

FTTX applications as indoor building distribution unit, LAN Networks

12 Port SC Simplex with Single Element Cassette



ORDER TABLE FOR SINGLE WALLMOUNT OPTICAL DISTRIBUTION BOX				
Part Number Breakdown: CAN-ODB-200-XX ¹ XX ² -XX ³ -XX ⁴ -XX ⁵				
XX ¹	: Fibre capacity	06 : 06 fibre	12 : 12 fibre	24 : 24 fibre
		48 : 48 fibre	96 : 96 fibre	
XX ²	: Adapter/coupler type	ST, LC, E2000, DIN SC, FC, etc..		
XX ³	: Cassette Type			
	SE : Single Element	SC : Single Circuit		
XX ⁴	: Mode			
	SS : Single Mode Simplex	MS : Multi Mode Simplex		
	SD : Single Mode Duplex	MD : Multi Mode Duplex		
XX ⁵	: FE			
	FE: Fully Equipped (pigtails, adators, splice cassettes, cable management tools are included)			

Example: CAN-ODB-200-24-SC-SD; 24 fibre, SC coupling, single mode duplex wall mount optical distribution box

CPE Indoor Fiber Distribution Terminal CAN-ALB-10X

Overview

Unique patch and splice box provides a compact method of splicing and patching up to 12 fibers.

Highlights

- ✓ Indoor Wallmountable fiber distribution box for low density applications
- ✓ Single door with magnet lock for flexibility
- ✓ Splicing and patching at the same box
- ✓ Expandable up to 12 splices and patches
- ✓ Modular interchangeable interfaces for all known connector types such as SC, FC, ST, E2000, LC, MU etc. are possible

Technical Details

Dimensions 142 mm (W) x 50 mm (D) x 203 mm (H)

Port Capacity 12 Ports (6 port SC Simplex or 12 ports LC Duplex)

Material Aluminum

Color Powder coat RAL7035

Weight 1 kg / empty

Applications

FTTX applications, inside of the buildings



Outdoor Polycarbonate Fiber Termination Boxes

Overview

Designed for harsh environments outside of the premises and on poles for FTTX applications.

Highlights

- ✓ IP65 protected with special gasketing
- ✓ Polycarbonate, UV-Resistant
- ✓ 4-24 port capacity
- ✓ Special Protection tubes and bend radien for protecting the incoming fiber from bending and guiding the fibers to the special designed splice cassettes in a professional way
- ✓ 100% Compatible to Bellcore GR-326 standards
- ✓ LC Duplex and SC Simplex Adaptors can be installed inside

Technical Details

Dimensions 200 mm (W) x 50 mm (D) x 220 mm (H) (24 ports)
165 mm (W) x 43 mm (D) x 180 mm (H) (4 ports)

Material Polycarbonate

Color Powder coat RAL7035

Weight 0,52 kg / empty (24 ports)

0,34 kg / empty (4 ports)

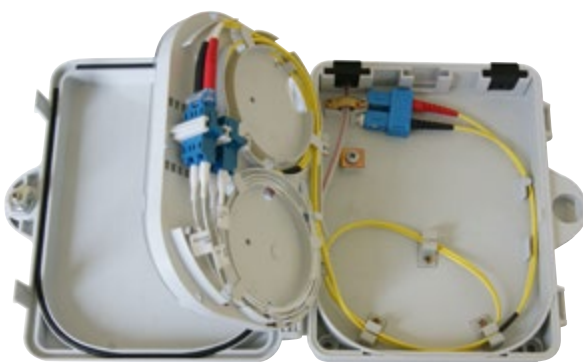
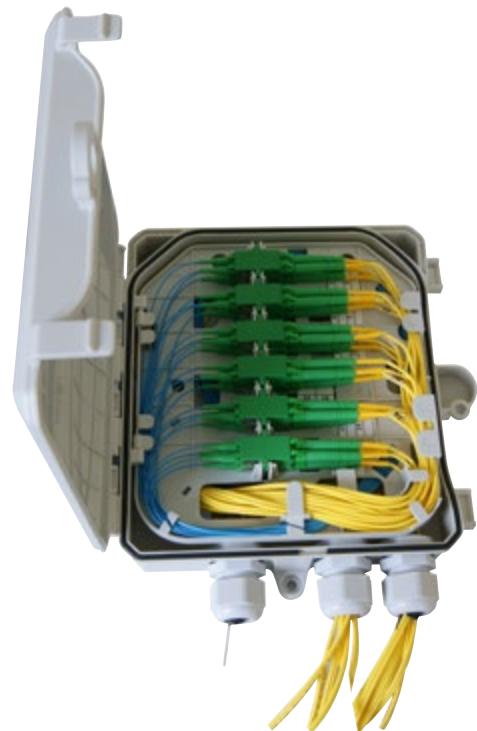
Applications

FTTX applications, Outside of the buildings and poles

CAN-POLY-300-4 PORTS



CAN-POLY-400-24 PORTS



CPE Indoor Fiber Distribution Terminal CAN-CPE-10X

Overview

CPE Indoor Fiber Distribution Terminal provides Customer Premises Equipment applications with a compact and secure enclosure for connecting fiber cables within building entrance locations, communications closets, and other indoor environments. CAN-CPE-10X is an injection molded design with an integral fiber retention system allowing for quick installation and a positive lock strain relief for most premise fiber cable. A compact wall-outlet providing an optical demarcation point for Fiber-to-the-X applications. Mounted on the inside or outside of a building, the optical CPE box provides physical protection for the transition between provider and customer. This device allows for the indoor and protected outdoors interconnect of up to 4 standard SC adapters in a protected white plastic enclosure to blend in most premise environments

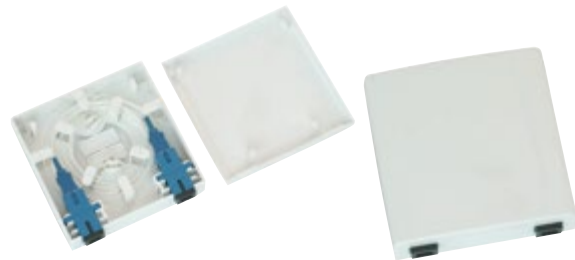
Highlights

- ✓ Compact size takes up less wall space for installation
- ✓ Up to 4 x adapters can be loaded
- ✓ Cover with snap mechanism and hole for lock
- ✓ Strain relief fixing options available
- ✓ Light weight and robust
- ✓ Wall mounting knockouts for easy fixation
- ✓ Can be mounted on wall or pole
- ✓ Molded inner slack storage area insures minimum bend radius preventing micro bends and unnecessary loss or fiber damage
- ✓ No additional tie wraps or clamps needed due to integral positive lock strain relief
- ✓ Inner tray retains up to two fusion or mechanical splice sleeves
- ✓ Accepts standard SC/LC connectors (UPC or APC)
- ✓ Removable cover for easy access to complete box in congested locations

Applications

FTTX applications, at the entrance of customer premises

2 Port Patch Only CPE Box CAN-CPE-103



4 Port Splice&Patch CPE Box CAN-CPE-102



8 Port Splice&Patch CPE Box CAN-CPE-105



Hybrid (1 Port Fiber Splice&2 Ports RJ 45) CAN-CPE-104



Fiber Termination Box CAN-POLY-500

Overview

Designed for harsh environments outside of the premises and on poles for FTTX applications.

Highlights

- ✓ IP65 protected with special gasketing
- ✓ Polycarbonate, UV-Resistant
- ✓ 2-8 port capacity
- ✓ Special Protection tubes and bend radien for protecting the incoming fiber from bending and guiding the fibers to the special designed splice cassettes in a professional way
- ✓ Special splice cassette of 12 port capacity with professional cable storage and protection
- ✓ 100% Compatible to Bellcore GR-326 standards
- ✓ LC Duplex and SC Simplex Adaptors can be installed inside

Applications

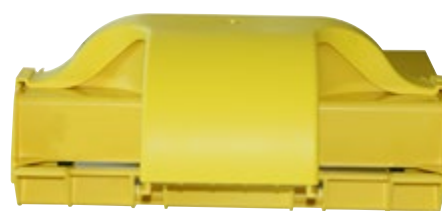
FTTX applications, Outside of the buildings and poles



Fiber Duct System - 100% Halogen Free

Protecting your fiber to secure fiber communication

- ✓ FiberDuct is a flexible duct system for fiber optic cables specifically produced and designed for both the European and US Market.
- ✓ The system is fully enclosed protecting the fiber from dirt and dust, the duct is strong enough to protect cables against the most rigorous conditions.
- ✓ It is manufactured from a Halogen free, flame-retardant UL94/V0 plastic. The product is designed to meet material specifications required throughout Europe.
- ✓ The system is easy to assemble. The only tools required are a drill, a screwdriver and a saw to cut the channels to length. The system is designed for speed of installation and minimum labour for the installer.
- ✓ The easy access covers allow fiber optic cables to be installed or removed at any time without the need to disconnect the whole system.
- ✓ The system is extremely adaptable and will evolve to suit this demanding market. Currently it is supplied in three sizes: 50mm x 50mm, 100mm x 100mm and 200mm x 100mm.
- ✓ Canovate offer a complete design package to assist you with the layout of your ducting system.



Fiber Raceway Outlet

The company is committed to delighting the customer and excelling in each of three key area's.

Highlights

- ✓ **Zero-halogen material**
- ✓ **No cutting required**
- ✓ **No tools needed**
- ✓ **Meets UL94V-0**
- ✓ **Total radius control**
- ✓ **Low profile**
- ✓ **Flex-tube adapter options**

Product

Technically advanced communications equipment needs superb ancillary support therefore:

- ✓ We will design product that surpasses the latest standards at the lowest possible cost.
- ✓ Continuous improvement will be at the forefront of our design strategy to continually innovate in our market.

People

To support the ideals of the company and the future needs of the customer we will invest in:

- ✓ Relationships with our customers so we anticipate their requirements and have a solution available before it is requested.
- ✓ Our people, will be competent to meet and surpass the requirements of the customer.



90° Horizontal Elbow



Vertical Tee Offset



General Application View



4 Way Cross Application



Reducer Part

Fiber Raceway Outlet

Canovate introduces a non-intrusive fiber optic ducting outlet. The first in a series of revolutionary components, the **Fiber Raceway Outlet (FRO)** is simply and easily placed over the sidewall of any new or existing channel to create a vertical drop-off from a horizontal run. With full radius control, the fiber outlet safely routes fibers to and from equipment bays or distribution frames.

Unlike most other products, the low-profile, fiber outlet is truly installed with no tools, not even a screwdriver! With only a 50mm profile above the channel's edge, it can be placed anywhere along the sidewall of straight channels. The differences don't stop there. The outlet and its accessories has been created using flame-retardant engineered plastics that not only meets the Bellcore **NEBS** specification, but also meets the zero-halogen requirements of the European community. All of which makes it a true worldwide solution.

The outlet has a unique two-piece cover with a hinged rear portion that allows users to access express fibers that bypass the outlet, without having to remove the main cover. So express fibers can be added, moved or changed without ever disturbing the fibers inside the outlet.

Key Features

- ✓ No cutting required
- ✓ No tools needed
- ✓ Total radius control
- ✓ Meets UL94V-0
- ✓ Zero-halogen material
- ✓ Low profile
- ✓ Mates with 100mm, 150mm, 200mm & 300mm (4", 6", 8" & 12") channels
- ✓ Snap-on covers
- ✓ Express fiber hinged cover
- ✓ Trumpet flare option
- ✓ 50mm x 50mm (2" x 2") and 100mm x 100mm (4" x 4") vertical adapters
- ✓ Flex-tube adapter options

ODF Application



Fiber Raceway Outlet is Applicable to all Existing Duct Systems

Fiber Raceway Outlet

Product Specifications

Fibers Capacity	200 3mm fibers
Flammability Rating	UL94V
Oxygen Index (LOI)	36%

Service

A demanding market requires fast solutions, to meet this challenge we believe that:

- ✓ All standard product should be available within 24 hours from order.
- ✓ If special solutions are required they will be available in 14 days.

Product

Technically advanced communications equipment needs superb ancillary support therefore:

- ✓ We will design product that surpasses the latest standards at the lowest possible cost.
- ✓ Continuous improvement will be at the forefront of our design strategy to continually innovate in our market.

People

To support the ideals of the company and the future needs of the customer we will invest in:

- ✓ Relationships with our customers so we anticipate their requirements and have a solution available before it is requested.
- ✓ Our people, will be competent to meet and surpass the requirements of the customer.

Notes: relating all products

Material : UL94/V0, Zero Halogen.

Colour : Standard yellow. Other colours on request.

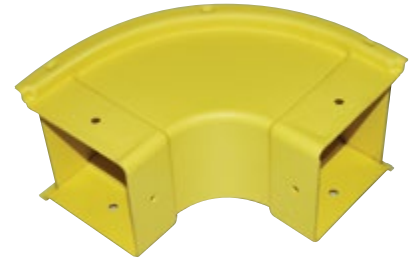
All dimensions are for reference only.

Finish : All outside surfaces have a haircell texture.

All parts have predrilled fastening holes.



Vertical Tee Duck



90° Horizontal Elbow

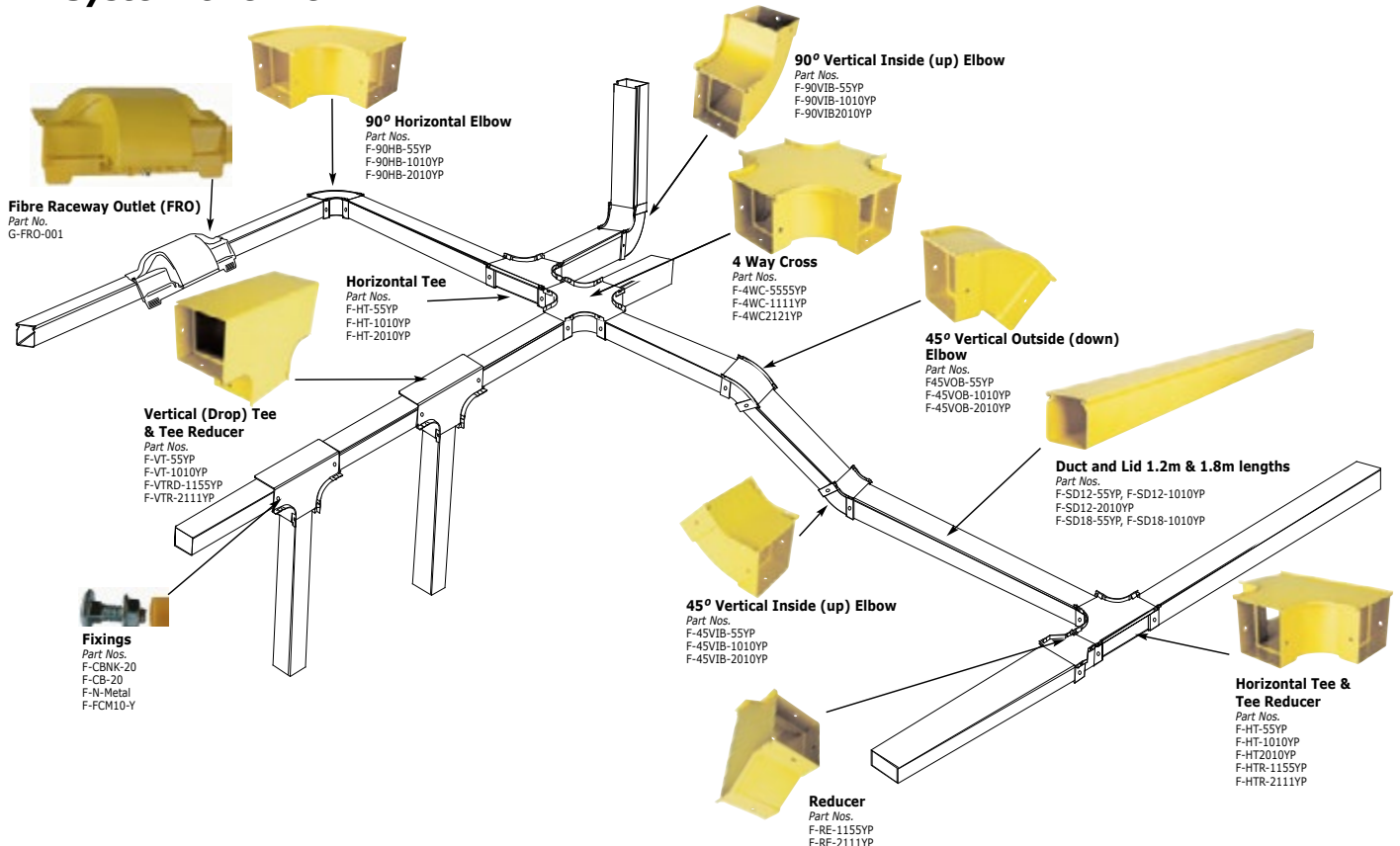


4 Way Cross



Vertical Tee Offset

System Overview



Troy ODF System

Side Access High Density Optical Distribution Frame CAN-ODF-700

Overview

The key to a successfully managed transmission network lies in the choice of the right fibre optic distribution system. CAN-ODF-700 solution provides flexible cabling access, expandable frame concept, integrated cable management and a future proof modular design with the highest termination capacity possible and superior cable management.

Highlights

- ✓ Standard 19" & ETSI installations
- ✓ Designed to be used together with high density side access type modules
- ✓ Maximum fiber density and superior cable management
- ✓ Special cable glands to fix the maximum number of bundle cables on the ground
- ✓ Slot type cable guide compartments to feed the modules via miniflex tubes
- ✓ No crushed or stressed fibers
- ✓ Wide range of splice, patch and cable storage options
- ✓ Bend Radius Protection 35 mm throughout entire frame and all modules
- ✓ Max Cable Protection
- ✓ Interchangeable cassettes for various cable/tube counts and connector styles
- ✓ Accepts WDM and splitter cassettes
- ✓ Integral patchcord management

Density Information:

- ✓ 14 Modules in 47 U Frame
- ✓ LC, FC, ST, MTRJ, E-2000 interfaces etc available
- ✓ The Frames are compliant to Telcordia Specification GR-449-core

Technical Details

Dimensions 900 mm (W) x 300 mm (D) x 2200 mm (H)

Material Mild Steel

Color Powder coat RAL7035

Weight 120 kg / empty

Maximum port capacity 2016 Port

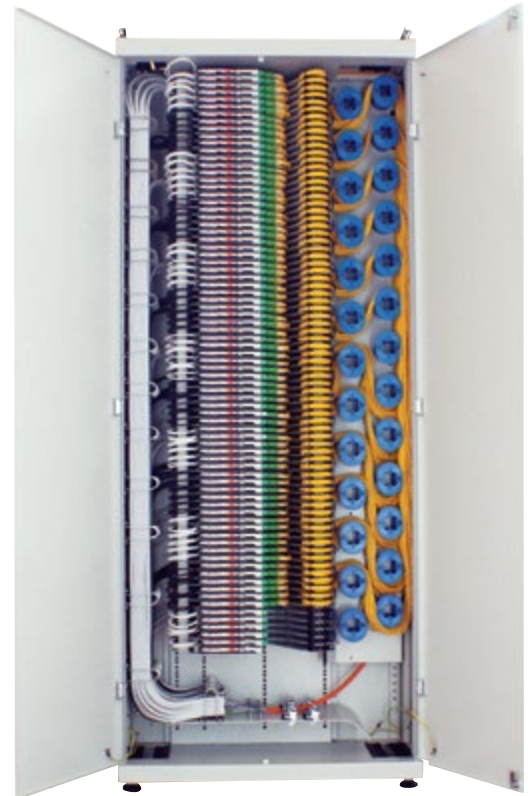
Maximum High Density Side Access Modules:

14 x 3U Module (144 ports) = 2016 ports many SFF connector/frame

Compliance GR-449-core of Telcordia Specification

Applications

Fiber Transmission Networks in Telco's Central Office applications, FTTX applications, Fiber exchange systems, Utility Networks



High Density Side Access Troy Module CAN-TROY-700

Overview

Ultimate new design with the most advanced splice & patch system and cable management ever developed for high density applications on carrier & transmission side.

Highlights

- ✓ Compact 3 U module
- ✓ Each U accommodates 2 fiber trays with each max. capacity of 24 fibers
- ✓ Max capacity of the module is 144 fibers for SSF duplex adaptors
- ✓ Fiber trays and connected patchcords can slide in and out independently as a pull-out unit
- ✓ Easy side access ensures laser safety
- ✓ Special splice cassette design, which allows splicing on one side and professional cable storage on the other side- no cable congestion!
- ✓ Special incoming cable fixing unit which ensures strong, easy and quick cable fixing for miniflex tubes- no need to use time consuming plastic cable ties!
- ✓ Integrated outgoing patchcord clamps and routing guides, which ensures min bend radius criteria of 35 mm and professional cable management.

Options

- ✓ 1U Module with 48 fibers

Technical Details

Dimensions 486 mm (W) x 258 mm (D) x 133 mm (H)

Material Mild Steel

Color Powder coat RAL7035

Maximum port capacity 144 Ports for SSF Double Connectors

Weight 4 kg



Each U accommodates 2 fiber trays
Integrated patchcord mandrels
19" rear mountable

EPHESUS ODF System

Swing Type High Density Optical Distribution Frame
CAN-ODF-600

Overview

CAN-ODF-600 is an advanced optical distribution frame system which provides an ultimate solution of the complicated requirements of customers like highest possible fiber termination capacity and superior cable management. High density swing type of module is also designed to fit a variety of termination, splice, and storage applications.

Highlights

- ✓ Standard 19" & ETSI installations
- ✓ Designed to be used together with high density swing type modules
- ✓ Maximum fiber density and superior cable management
- ✓ Saves a lot of valuable floor space and rack costs
- ✓ Minimal cable movement while opening and closing the modules
- ✓ No crushed or stressed fibers
- ✓ Wide range of splice, patch and cable storage options
- ✓ Bend Radius Protection 35 mm throughout entire frame and all modules
- ✓ Max Cable Protection
- ✓ Suitable for ribbon and non-ribbon optical fibers

Density Information:

- ✓ 17 Modules in 47 U Frame
- ✓ 144 LC Duplex / Module - 2448 LC Duplex / Frame
- ✓ LC, FC, ST, MTRJ, E-2000 interfaces etc available
- ✓ The Frames are compliant to Telcordia Specification GR-449-core
- ✓ Fully front accessible

Technical Details

Dimensions 900 mm (W) x 300 mm (D) x 2200 mm (H)

Color Powder coat RAL7035

Weight 120 kg / empty

Maximum port capacity 2448 Ports

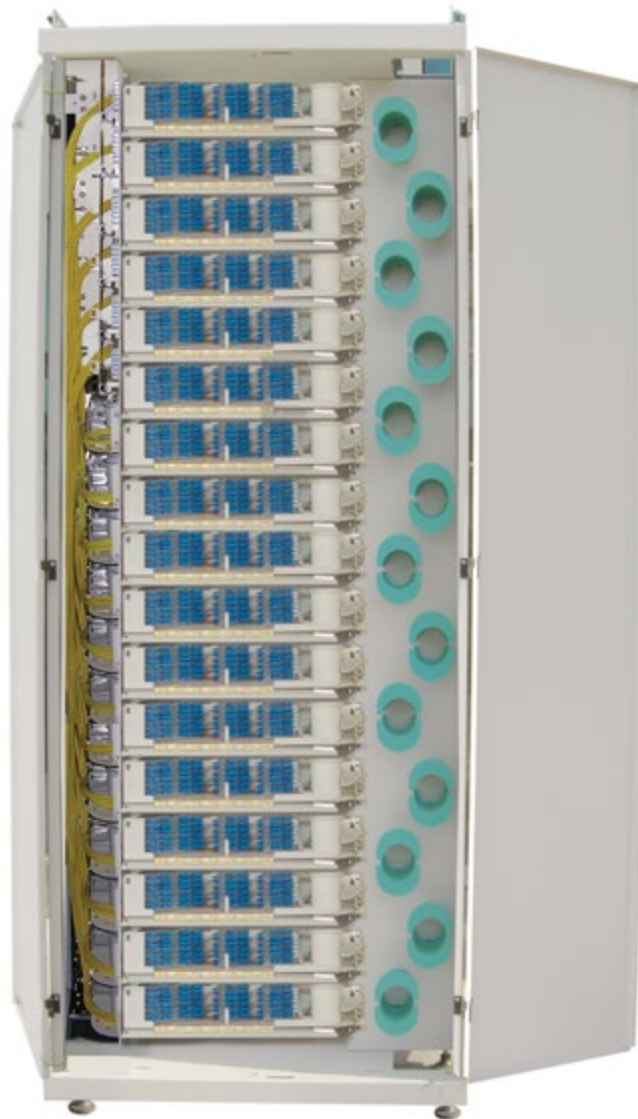
Maximum High Density

Swing Modules 17 (17 x 144 = 2448 ports LC duplex / frame)

Compliance GR-449-core of Telcordia Specification

Applications

Fiber Transmission Networks in Telco's Central Office applications, FTTX applications, Fiber exchange systems, Utility Networks



Incoming Fiber Tubes entering from the left bottom side.



Mounting Bracket with cable glands



Cable Entry



Adjustable cable glands suitable for different cable diameters



Unloaded ODF

Fiber Optic Street Cabinet CAN-FDT-10X

Overview

Advanced fiber optic networks using Point-to-Point or Point-to-Multi point architectures requires high density fiber distribution points to supply FTTX services to the customers. High-quality fiber optic connectivity relies on the increased protection offered by weather-proof outdoor cabinets.

Highlights

- ✓ Weather-proof outdoor cabinet for installation of optical distribution modules
- ✓ IP 65 protected
- ✓ Assembly of modular optical building blocks like splice, patch and splitter modules
- ✓ Suitable for multi fiber management
- ✓ Provides a secure anchor for incoming loose tube cables within the cabinet
- ✓ Bend Radii for excess patch cord storage
- ✓ Suitable for different cable diameters
- ✓ Easy installation and removal
- ✓ Doors are protected from external access through hidden hinges
- ✓ High resistivity against corrosion-galvanized steel
- ✓ 19 inch mounting rails
- ✓ Single or Double front door
- ✓ CNC controlled polyurethane (PUR) gasketing is available for all of the complete openable surfaces of the outdoor to provide IP65 protection degree ,which is complying with the EN60529 standard
- ✓ Optional: Mounting brackets for wall applications



Applications

Fiber Cross-connect applications, FTTX distribution hubs, Applications for Passive Optical Networks (PON) and Optical Access Networks (OAN) as a distribution point to network terminations for hybrid access technology (fiber/copper) as an Optical Node Unit (ONU)

Technical Details

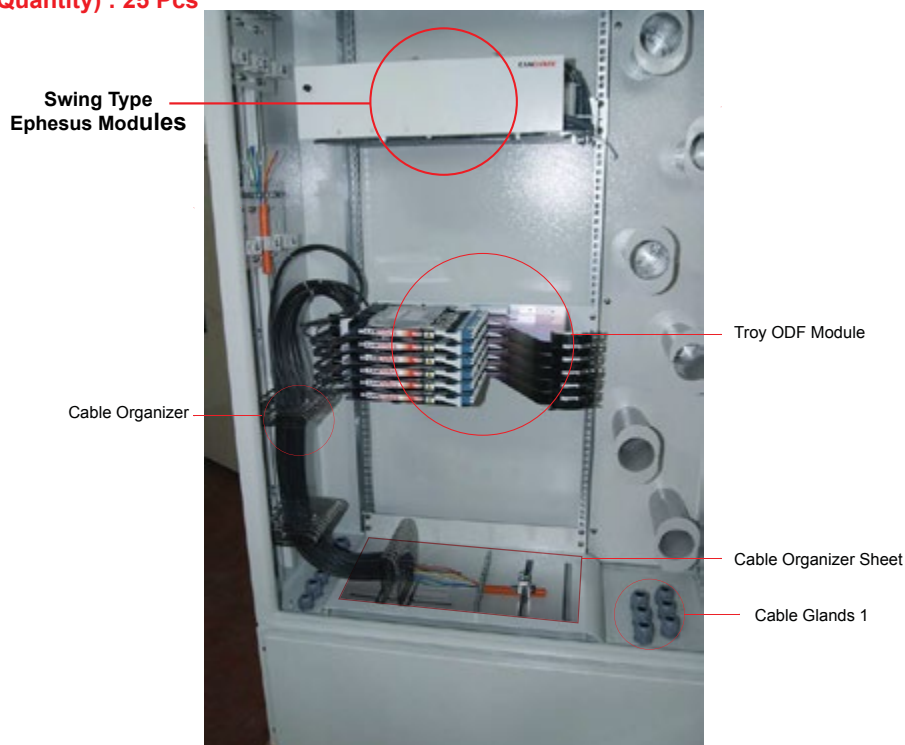
Dimensions 940 mm (W) x 420 mm (D) x 1530 mm (H)

Material Galvanized

Color Powder coat RAL7035 or RAL9005

Maximum Port Capacity 712 Ports

MOQ (Minimum Order Quantity) : 25 Pcs



inorax Network & Server Rack Cabinets

In today's and future datacenter trends, the most important factors to be considered are power distribution, cooling and cable management on rack level. Efficiently engineered rack mounting capabilities and capacity become most critical feature to optimize utilization of available space. Canovate offers ideal rack enclosure technologies offering innovative, flexible, stylish and cost effective form, fit and function; whether it is a datacenter, a server room or a stand-alone application.

inorax-AL Network & Server Rack Cabinets

Its patented aluminum modular frame technology, capabilities and exceptional strength make this model unique and stand out in terms providing industry leading structural rigidity, better access, optimized available mounting space and ease of installation, not to mention range of interoperable accessory range. Available as at-pack.

- ✓ Designed according to very high structural rigidity requirements
- ✓ Industry leading static load carrying capacity exceeding 2000KG
- ✓ Lighter weight frame technology enabling ease of transport and convenient handling
- ✓ Higher corrosion resistance
- ✓ Interlocking bolt-on and heavy-duty modular frame joints, an innovative weld-free technology
- ✓ Easy to assemble and completely disassemble in a matter of minutes
- ✓ Ultimate cosmetic appearance



inorax-ST Network & Server Rack Cabinets

High strength steel based modular or fully welded patent-pending frame technology and wide range of configuration options makes it a cost-effective reliable solution offering optimized available mounting space and ease of installation. Available as at-pack. Designed according to high structural rigidity requirements

- ✓ Designed according to high structural rigidity requirements
- ✓ Static load carrying capacity exceeding 1500KG
- ✓ Interlocking bolt-on and heavy-duty top and bottom frames
- ✓ Easy to assemble and completely disassemble in a matter of minutes
- ✓ Appealing cosmetic appearance



Flat-pack option enables savings up to 60% in the transport cost and warehouse space.

Wallmount Cabinets

Canovate Wallmount cabinets are designed to ensure professional cable management and easy access inside the cabinet for installers. We are offering a wide range of wallmount enclosures for every type of application to be required in small and medium scale networks.



Cold & Hot Aisle Containment System

- ✓ Enables isolation of hot and cold aisles to maximize cooling system efficiency and minimize cooling energy requirement
- ✓ Highly modular, scalable, expandable, and retrofit-able
- ✓ Optimum cooling solution for big and medium scale datacenters coupled with CRAC units to increase efficiency of cooling system.
- ✓ Provides moderate efficiency, energy saving and free cooling capabilities

Advantages:

- ✓ More efficient than traditional central CRAC cooling technologies - up to 50% energy savings
- ✓ Modular, scalable, expandable, retrofit-able

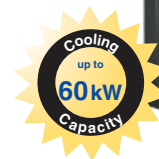


Front Cooler

- ✓ Front Cooler is an ultimate solution for medium to large scale datacenter applications
- ✓ A chilled-water based technology bringing cold air right to the server racks where heat dissipation is maximum, eliminating raised floor requirement in contrast to CRAC cooling systems
- ✓ Integration into Cold & Hot Aisle Containment Systems yields industry leading cooling efficiency performance

Advantages:

- ✓ Significantly more efficient than traditional CRAC based cooling
- ✓ Free-cooling capability is considerably higher than CRAC units ($\leq 14^{\circ}\text{C}$)
- ✓ Eliminates raised floor requirement
- ✓ Water based cooling – A totally Green IT
- ✓ Industry leading cooling capacity up to 60kW

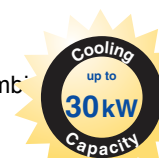


Side Cooler

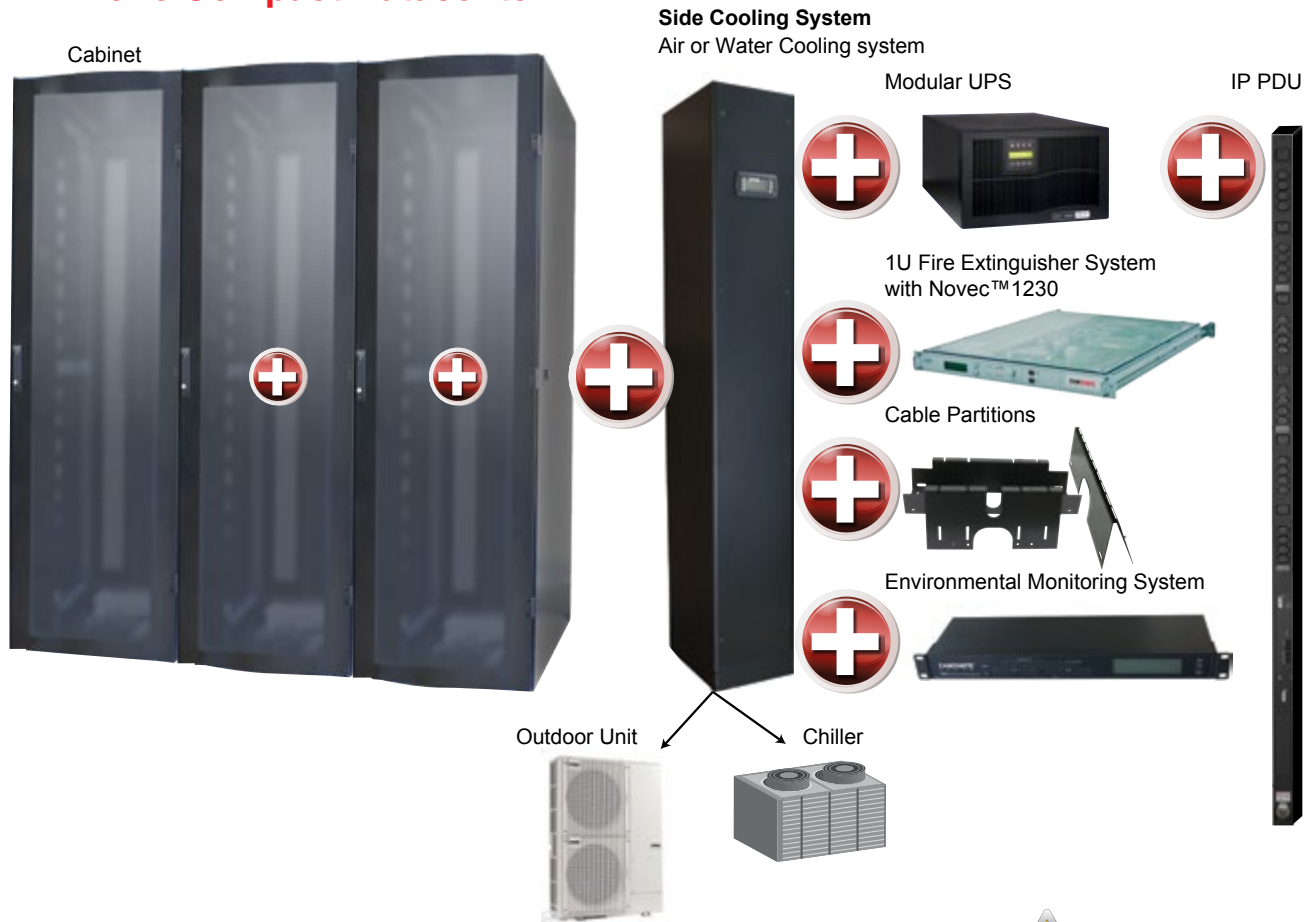
- ✓ The perfect fit to high density standalone racks where thermal load exceeds 30 kW or for small computer server rooms where infrastructure is limited for necessary expansions
- ✓ Highly efficient for small to medium size enterprises, institutions and branch offices
- ✓ Side cooling system is a chilled-water based solution that is fully integrated to one or either side of IP protected racks and provides individual or standalone rack cooling up to 30 kW
- ✓ One side cooling system can serve up to three server cabinets with 10kW thermal load each







Advantages:

- ✓ Ideal for high density server racks and small datacenters
- ✓ Individual and standalone rack cooling capacity up to 30kW
- ✓ Water based cooling – A totally Green IT
- ✓ Eliminates raised floor requirement
- ✓ Free-cooling capability is significantly higher than CRAC cooling systems, for ambient temperatures below 14°C




All-in-one Compact Datacenter



-  Air Flow Sensor
-  Humidity Sensor
-  Door Contact
-  Liquid Sensor
-  Smoke Sensor
-  Temperature



 **Compliance Statement** No. 2012-217

Connecting Hardware, Category 5e

Company
CANOVATE Elektronik Endüstri TIC. AS
Ekşiöğlü Mah. Atabey Cad. No:12
Çekmeköy
İstanbul, TR 34794
Turkey

Product description
Unscreened Category 5e RJ45 Keystone Jack characterised up to 100 MHz, 100 Ω

Product identification
KUO-JM-U-CSE-180-1

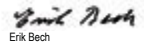
Generic cabling and cabling components standards - Category 5e connector requirements


- ISO/IEC 11801:2011 (Ed. 2.2)
- IEC 60603-7-2:2010 (Ed. 2.0)
- EN 50173-1:2011
- EN 50173-2:2007 including amendment A1:2010
- ANSI/TIA-568-C.2:2009

Technical report DELTA-T203231-01, DANAK-19/12247 **EC Cabling product ID** 5550, 5551 **Certificate valid until** 11 July 2013


This product has been tested by EC Cabling Group of DELTA and complies with the electrical requirements of the above specified standards and "Terms and conditions for use of the EC VERIFIED marking on generic cabling products", DQP231006. The testing included measurement of NEXT with a compliant test plug and calculation of all the 9 test cases in both measurement directions. The product takes part in a maintenance of certification schedule, which implies that DELTA EC Cabling performs a quality audit of the manufacturer's production and QA sites. The maintenance testing of the product is performed on a sample basis once a year.


Hersholm, 11 July 2012

 Erik Bech
Test Manager

 Claude Videt
Project Manager

DELTA
Verlhedsvej 4 Tel. +45 72 19 40 00
2970 Hersholm Fax +45 72 19 40 01
Denmark www.madebydelta.com/cable

 TEST Reg. no. 19

 **Compliance Statement** No. 2012-218

Connecting Hardware, Category 6

Company
CANOVATE Elektronik Endüstri TIC. AS
Ekşiöğlü Mah. Atabey Cad. No:12
Çekmeköy
İstanbul, TR 34794
Turkey

Product description
Unscreened Category 6 RJ45 Panel characterised up to 250 MHz, 100 Ω

Product identification
KUO-O-PP1U24-C6-R45-2


Generic cabling and cabling components standards - Category 6 connector requirements


- ISO/IEC 11801:2011 (Ed. 2.2)
- IEC 60603-7-4:2010 (Ed. 2.0)
- EN 50173-1:2011
- EN 50173-2:2007 including amendment A1:2010
- ANSI/TIA-568-C.2:2009

Technical report DELTA-T203231.02, DANAK-19/11248 **EC Cabling product ID** 5552 **Certificate valid until** 11 July 2013


This product has been tested by EC Cabling Group of DELTA and complies with the electrical requirements of the above specified standards and "Terms and conditions for use of the EC VERIFIED marking on generic cabling products", DQP231006. The testing included measurement of NEXT with a compliant test plug and calculation of all the 14 test cases in both measurement directions. The product takes part in a maintenance of certification schedule, which implies that DELTA EC Cabling performs a quality audit of the manufacturer's production and QA sites. The maintenance testing of the product is performed on a sample basis once a year.


Hersholm, 11 July 2012

 Erik Bech
Test Manager

 Claude Videt
Project Manager

DELTA
Verlhedsvej 4 Tel. +45 72 19 40 00
2970 Hersholm Fax +45 72 19 40 01
Denmark www.madebydelta.com/cable

 TEST Reg. no. 19

 **Compliance Statement** No. 2012-219

Connecting Hardware, Category 6

Company
CANOVATE Elektronik Endüstri TIC. AS
Ekşiöğlü Mah. Atabey Cad. No:12
Çekmeköy
İstanbul, TR 34794
Turkey

Product description
Unscreened Category 6 RJ45 Keystone Jack characterised up to 250 MHz, 100 Ω

Product identification
KUO-JM-U-C6-180-1

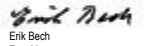
Generic cabling and cabling components standards - Category 6 connector requirements


- ISO/IEC 11801:2011 (Ed. 2.2)
- IEC 60603-7-4:2010 (Ed. 2.0)
- EN 50173-1:2011
- EN 50173-2:2007 including amendment A1:2010
- ANSI/TIA-568-C.2:2009

Technical report DELTA-T203231-03, DANAK-19/12249 **EC Cabling product ID** 5553 **Certificate valid until** 11 July 2013


This product has been tested by EC Cabling Group of DELTA and complies with the electrical requirements of the above specified standards and "Terms and conditions for use of the EC VERIFIED marking on generic cabling products", DQP231006. The testing included measurement of NEXT with a compliant test plug and calculation of all the 14 test cases in both measurement directions. The product takes part in a maintenance of certification schedule, which implies that DELTA EC Cabling performs a quality audit of the manufacturer's production and QA sites. The maintenance testing of the product is performed on a sample basis once a year.


Hersholm, 11 July 2012

 Erik Bech
Test Manager

 Claude Videt
Project Manager

DELTA
Verlhedsvej 4 Tel. +45 72 19 40 00
2970 Hersholm Fax +45 72 19 40 01
Denmark www.madebydelta.com/cable

 TEST Reg. no. 19

 **Compliance Statement** No. 2012-286

Data communication cable, Category 6

Company
CANOVATE Elektronik Endüstri TIC. AS
Ekşiöğlü Mah. Atabey Cad. No:12
Çekmeköy
İstanbul, TR 34794
Turkey

Product description
Unscreened cable (U/UTP) characterised up to 250 MHz
Horizontal floor wiring cable, 100 Ω
4 twisted pairs
Flame retardant, halogen free

Product identification
Cat. 6 UTP Cable, LSZH (Grey), 305m reel

Generic cabling and cabling components standards - Category 6 cable requirements

- ISO/IEC 11801:2011 (Ed. 2.2)
- IEC 61156-5:2009 (Ed. 2.0)
- EN 50173-1:2011
- EN 50173-2:2007 including amendment A1:2010
- EN 50288-6-1:2003
- ANSI/TIA-568-C.2:2009

Standards for flammability, halogen acidity, and smoke performance

- IEC 60332-1(-1,2):2004
- IEC 60754-(1,2)
- IEC 61034-(1,2)

Technical report DELTA-T203675, DANAK-19/12425 **EC Cabling product ID** 5569 **Certificate valid until** 17 September 2013


This product has been tested by EC Cabling Group of DELTA and complies with the requirements of the above specified standards and "Terms and conditions for use of the EC VERIFIED marking on generic cabling products", DQP231006. The product takes part in a maintenance of certification schedule, which implies that EC Cabling performs a quality audit of the manufacturer's production and QA sites. The maintenance testing of the product is performed on a sample basis.

Hersholm, 17 September 2012

Erik Bech
Test Manager

Claude Videt
Project Manager

DELTA
Verlhedsvej 4 Tel. +45 72 19 40 00
2970 Hersholm Fax +45 72 19 40 01
Denmark www.madebydelta.com/cable

 TEST Reg. no. 19

Intertek
3933 US ROUTE 11, CORTLAND, NEW YORK 13045
Phone Number: 1-800-345-3851 Fax Number: 607-758-3648

REPORT OF TEST

RENDERED TO:

Canovate Elektronik
Turgut Ozal Cad. No:4
Alemdag Cekmekoy-Istanbul
Turkey

The product described in this Report was tested and examined by Intertek for compliance to the standard listed below. The products listed below are not part of an Intertek ETL SEMKO Verification Program. The results are provided to the client as a one time performance test and shall not be utilized to imply compliance to the standard as part of an on-going program.

Reference Intertek Report No.: 3154741CRT-001a Dated: June 30, 2008

Model Number(s): H03-0251X

Description: 25 Pairs, 24 AWG, FT/TP, Non-Plenum Riser, Backbone, Telecommunications Cable

The tests, test methods, and results of tests, compiled in the referenced report are in compliance with the following specification:

Standard:
CEI/IEC 61156-4 Multicore and symmetrical paired cables for digital communications – Part 4 Riser cables, Second edition 2003-04

Conclusion:
The Category 3 Cable, as previously described and supplied by the client was tested in accordance with the procedures contained in CEI/IEC 61156-4, Multicore and symmetrical paired cables for digital communications – Part 4 Riser cables, Second edition 2003-04. The sample did comply with applicable transmission requirements. The testing was performed at Intertek located in Cortland, New York.

Approved By:
Antoine Pelletier
Antoine Pelletier
Engineer
Global Cabling Products Testing

This report is for the exclusive use of Intertek's Client and is provided pursuant to the agreement between Intertek and its Client. Intertek's responsibility and liability are limited to the terms and conditions of the agreement. Intertek assumes no liability to any party, other than to the Client in accordance with the agreement, for any loss, expense or damage occasioned by the use of this report. Only the Client is authorized to copy or distribute this report and then only in its entirety. Also use of the general name or one of its marks for the sale or advertisement of the tested material, product or service must first be approved in writing by Intertek. The observations and test results in this report are relevant only to the sample tested. This report by itself does not imply that the material, product, or service is or has ever been under an Intertek certification program.

BUREAU VERITAS
Certification

Certification
awarded to

CANOVATE ELEKTRONIK ENDÜSTRİ VE TİCARET A.Ş.

**ALEMDAĞ MERKEZ MAH. TURGUT ÖZAL CAD. NO: 4
ÇEKMEKÖY, İSTANBUL, TÜRKİYE**

Bureau Veritas Certification certifies that the Management System of the above organization has been audited and found to be in accordance with the requirements of the management system standards detailed below

Standards

ISO 9001:2008

Scope of supply

DESIGN, MANUFACTURING, SALES AND AFTER SALES SUPPORT OF DATA CENTER SOLUTIONS, SYSTEM ROOM HARDWARE, FIBER OPTIC TRANSMISSION AND ACCESS SYSTEMS, FT/TP SOLUTIONS, FIBER OPTIC PATCH PANELS, OUTDOOR CABINETS, 1st FLOOR STANDING CABINETS, 2nd WALL MOUNT CABINETS, 1st CABINET ACCESSORIES, SUBRACKS, SMART POWER DISTRIBUTION UNITS, COOLING SYSTEMS, ENVIRONMENTAL MONITORING SYSTEMS
SALES AND AFTER SALES SUPPORT OF IP KVM SYSTEMS, STRUCTURED CABLING PRODUCTS, UPS, RF CABLE AND ACCESSORIES

Original Approval Date: 05 JULY 2010

Subject to the continued satisfactory operation of the organization's Management System, this certificate is valid until: 04 JULY 2013

To check this certificate validity please call +36 316 518 40 20
Further clarifications regarding the scope of this certificate and the applicability of the management system requirements may be obtained by contacting the organization.

Certificate Number: TR01241 Date: 05 JULY 2010

DELTA
Dünya Elektronik
Light & Acoustic

Bureau Veritas Division (France) SAS
Catherine-Suzanne Gaudin, Chemin de l'Abbaye, B.P.2401, F-33124, Mérignac, FRANCE

We ship ideas, meet the real world.

Compliance Statement

No. 2005-001 - Class E Channel

Company
Canovate Elektronik Endüstri Ticaret A.Ş.
Turgut Ozal Bulvarı No:4
Alemdag, Istanbul, TR 34794
Turkey

Channel Identification (4 connector model)

85 metres of horizontal cable:
Canovate A.S. UTP 4P8 24AWG CAT.6 Cable ID Code: CCC4U-1-1

2x5, 4 and 1 metres flexible cable:
Canovate A.S. UTP 4P8 24AWG CAT.6 Patch Cable ID Code: CPC-6-4(U)-xxJM-1

Plug:
Canovate A.S. CAT.6 UTP Plug ID Code: CP-RU-8P

Wall Outlet:
Canovate A.S. CAT.6 UTP Wall Outlet w/RJ45 CJ-RSU-8P Jack ID Code: C(xx)-4U(x)01-1

Patch Panel:
Canovate A.S. CAT.6 UTP Patch Panel ID Code: CPP(x)-IU-(xx)-6

Generic cabling standards, cabling components standard

- ISO/IEC 11801 2nd edition: 2002
- EN 50173-1:2002
- ANSI/EIA/TIA-568-B.2-1

Technical report
DELTA-ED11866, DAMAK-1911366

This product has been tested by the EC (European Cabling) group of DELTA and complies with the electrical requirements of the above specified standards. Furthermore, it complies with "Terms and conditions for use of the EC 'ULIFIED' marking on generic cabling products", QCP 210104, version 13, 26 July 2004. The product takes part in a maintenance of qualification schedule, which implies that the EC (European Cabling) group performs a sample test of the product once a year. The certificate is valid until 2 January 2009.

Helsinki, 3 January 2005

Erik Bach
Erik Bach
Test Manager

Ole Christensen
Ole Christensen
Project Manager

DELTA
Dünya Elektronik,
Light & Acoustic
Helsinginkatu 4
20720 Hangoinen
Finland
Tel: (+358) 22 19 40 30
Fax: (+358) 22 19 40 31
www.delta.fi

Certificate of Compliance

Certificate Number: 160587 - E303540
Report Reference: E303948, May 9th, 2006
Issue Date: 2010 May 16

Page 1 of 2

UL Underwriters Laboratories Inc.

Issued to: CANOVATE ELEKTRONIK ENDÜSTRİ TIC A S
TURGUT ÖZAL BULVARI 4
34794 TURKEY

This is to certify that representative samples of Enclosure and Racks System
Information Technology & Communication (ITC) Equipment Cabinet,
Model CAN-FS-428X, where X can be 6, 8 or 1
See Addendum for Model Differences

Standards for Safety: UL 60950-1 - Safety of Information Technology Equipment - Part 1: General Requirements
CSA-C22.2 No. 60950-1-01 - Safety of Information Technology Equipment - Part 1: General Requirements

Additional Information: Not Applicable

Only those products bearing the UL Listing Mark for the US and Canada should be considered as being covered by UL's Listing and Follow-Up Service meeting the appropriate requirements for US and Canada.

The UL Listing Mark for the US and Canada generally includes the UL in a circle, together with "L" and "LST" identifiers. The word "LISTED" is a control number (not an alphanumeric) assigned by UL, and the product category name (product identifier) as indicated in the appropriate UL Directory.

Look for the UL Listing Mark on the product

Issued by: *Maria Brooks*
Wendee Alonaycha, Project Engineer
UL International Italia Srl
For information and documentation regarding UL Listing Mark services are provided at <http://www.ul.com> or contact your local UL office.

Reviewed by: *Maria Brooks*
Maria Brooks, Staff Engineer
UL International Italia Srl
UL International Italia Srl
For information and documentation regarding UL Listing Mark services are provided at <http://www.ul.com> or contact your local UL office.



Structured Cabling Solutions



CANOVATE®